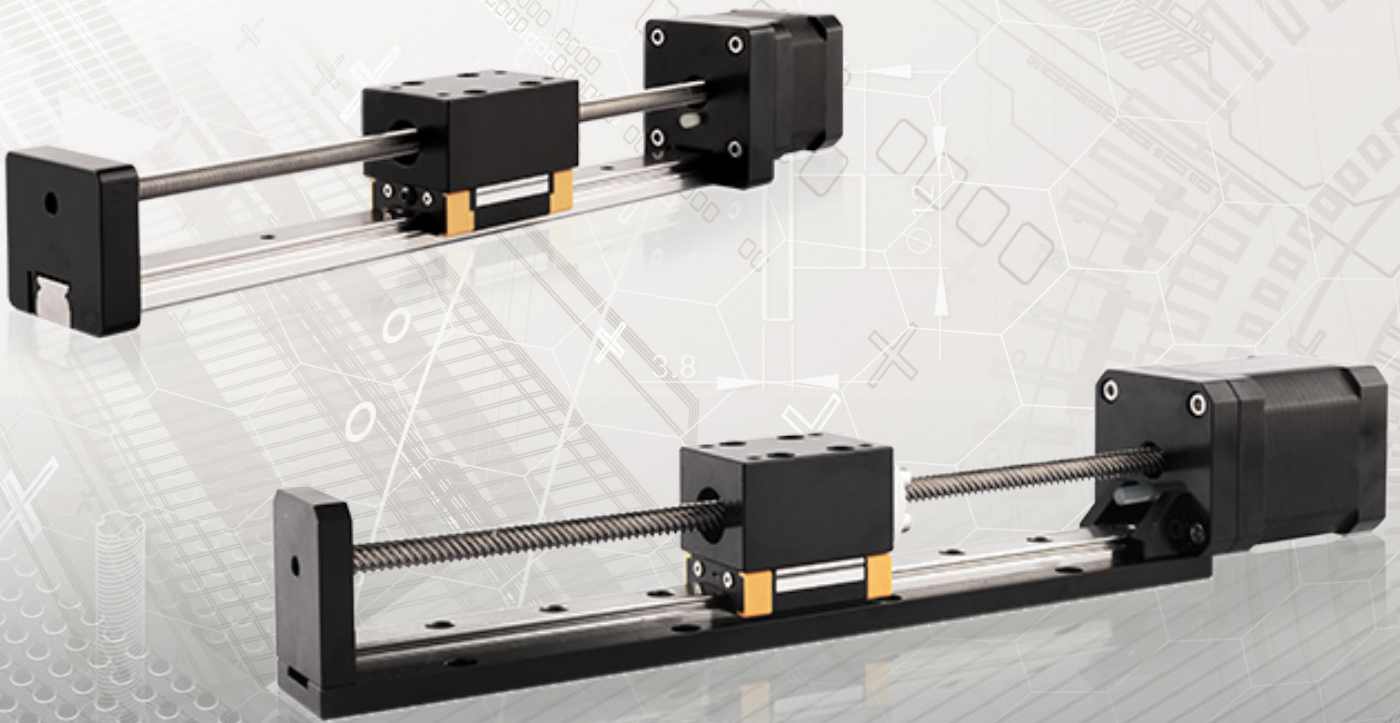


DINGS'

Precision Motion Specialist

DLM · DSM SERIES PRODUCT CATALOG



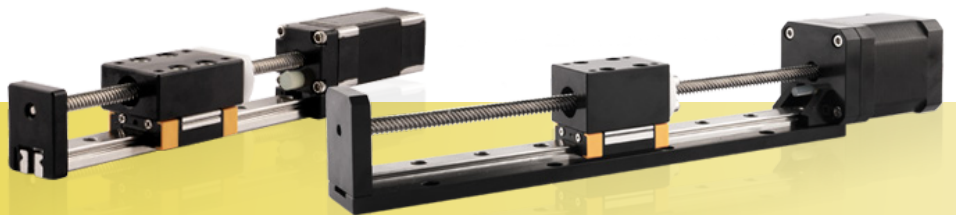
Based on our company's platform product high-precision screw stepper motor, combined with linear guide rails, we have designed DLM series and DSM series simple modules.

The product has a compact structure and high positioning accuracy, achieving mechanical miniaturization for customers. Both modules have a variety of lead screw and stroke options, providing accessories such as encoders and power brakes (refer to optional accessories for sliding screw linear actuators), as well as special customized products.

DLM Series is good precision, high diversity of optional stroke and lead based customization linear module which can provide customers with integrated customization solutions.

DSM series of precise and compact linear modules combines all major aspects of the precise linear Motor system into a small and economical structure, including external drive linear actuators, precise screw rods and high-precision linear guides.

DSM series linear modules are available in NEMA 6, 8, 11, 14, and 17 motor sizes. There are over 80 types of screw rods available for matching, with a range of lead options ranging from 0.3 to 25.4mm.



DLM·DSM SERIES

CONTENTS

DLM SERIES

Part number construction

14 mm

20 mm

28 mm

35 mm

42 mm

57 mm

DSM SERIES

Part number construction

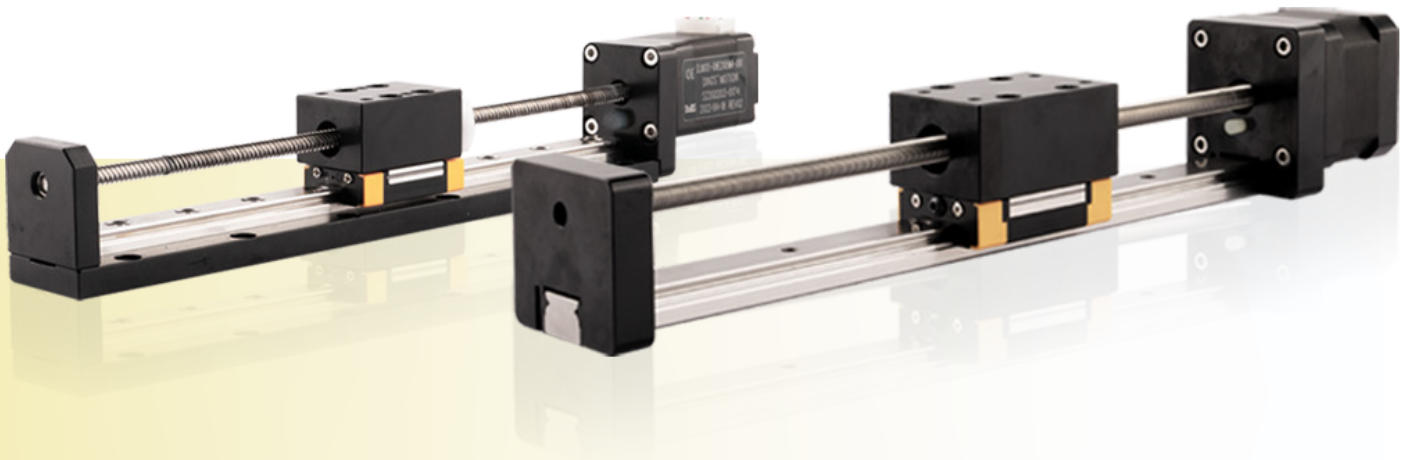
14 mm

20 mm

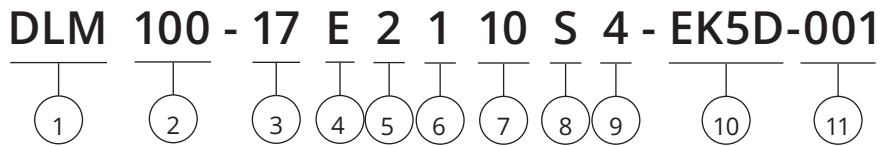
28 mm

35 mm

42 mm



[DLM] Part Number Construction



- ① Product Name
DLM Series Module
- ② Stroke (mm)
100 = 100mm
- ③ Motor Size

Motor Size (mm)	14	20	28	35	42	57
Motor Size (NEMA)	6	8	11	14	17	23
- ④ Motor Type
E = External type
N = Non-Captive type
- ⑤ Motor Step Angle
2 = 2 Phase with 1.8°
4 = 2 Phase with 0.9°
- ⑥ Motor Length
1 = Single stack
2 = Double stack
- ⑦ Rated Current / Phase
XX = X.X (A) / Phase
- ⑧ Lead Screw Code
Please refer to lead screw code selection table
- ⑨ Number of Lead Wires
4 = 4 Flying leads
6 = 6 Flying leads
- ⑩ Option
EKX = Encoder [X = Encoder Resolution]
P = Manual Knob
B = Brake
X = Rear Shaft
R = Encoder Ready
C = Customize
N = No processing at the rear end
- ⑪ Customer Sequence Number

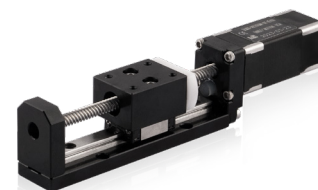
Example

Part Number	DLM100-17E2110S4-EK5D-001
Description	DLM Linear Module 100mm Stroke NEMA 17 External Linear Actuator 2 Phase / 1.8° Stepper Single Stack 1.0A / Phase S Lead (0.25" or 6.35mm) 4 Flying Wires EK5 Encoder with differential output 1,000 lines Serial Number 001

14mm DLM

Based on DINGS' platform products, high precision of lead screw linear actuator and self-developed simple linear module, DLM 14mm series is compact and reliable structure of linear solution.

DLM 14mm Series is good precision, high diversity of optional stroke and lead based customization linear module which can provide customers with integrated customization solutions.



Motor Characteristics

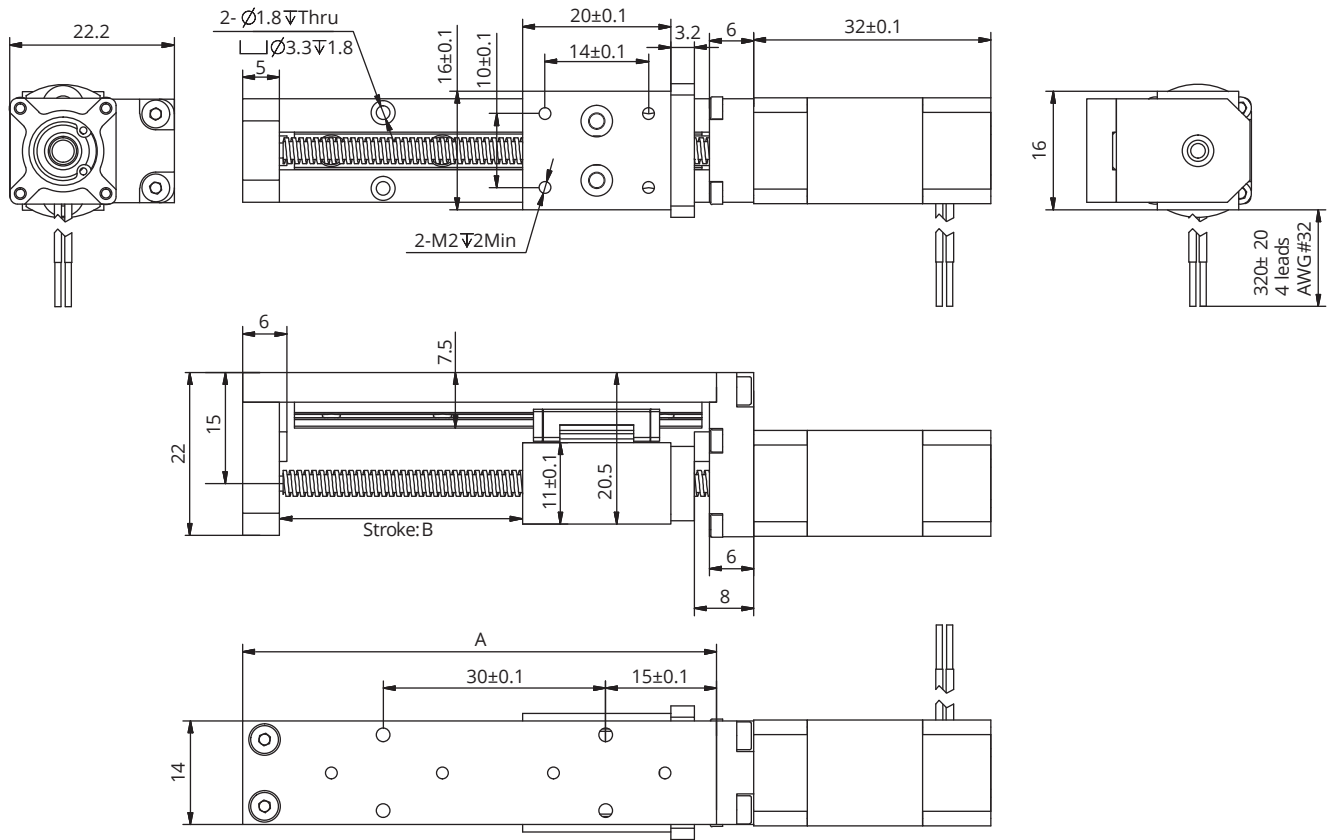
Motor	Voltage (V)	Current (A _{RMS})	Resistance (Ω)	Inductance (mH)	Weight (g)	Lead Wire No.	Motor Length (mm)
6-2103	6.6	0.3	22	4.5	60	4	32

Available Lead Screw and Travel per Step

Screw Dia. (inch)	Screw Dia. (mm)	Lead (inch)	Lead (mm)	Lead Code	Travel Per Step @1.8° (mm)*
0.138	3.5	0.0118	0.3	AF	0.0015
0.138	3.5	0.024	0.6096	AA	0.003048
0.138	2.5	0.0394	1	AB	0.005
0.138	3.5	0.048	1.2192	B	0.006096
0.138	3.5	0.0787	2	G	0.01
0.138	3.5	0.1575	4	M	0.02
0.138	3.5	0.315	8	T	0.04

14mm DLM

Dimensional Drawings

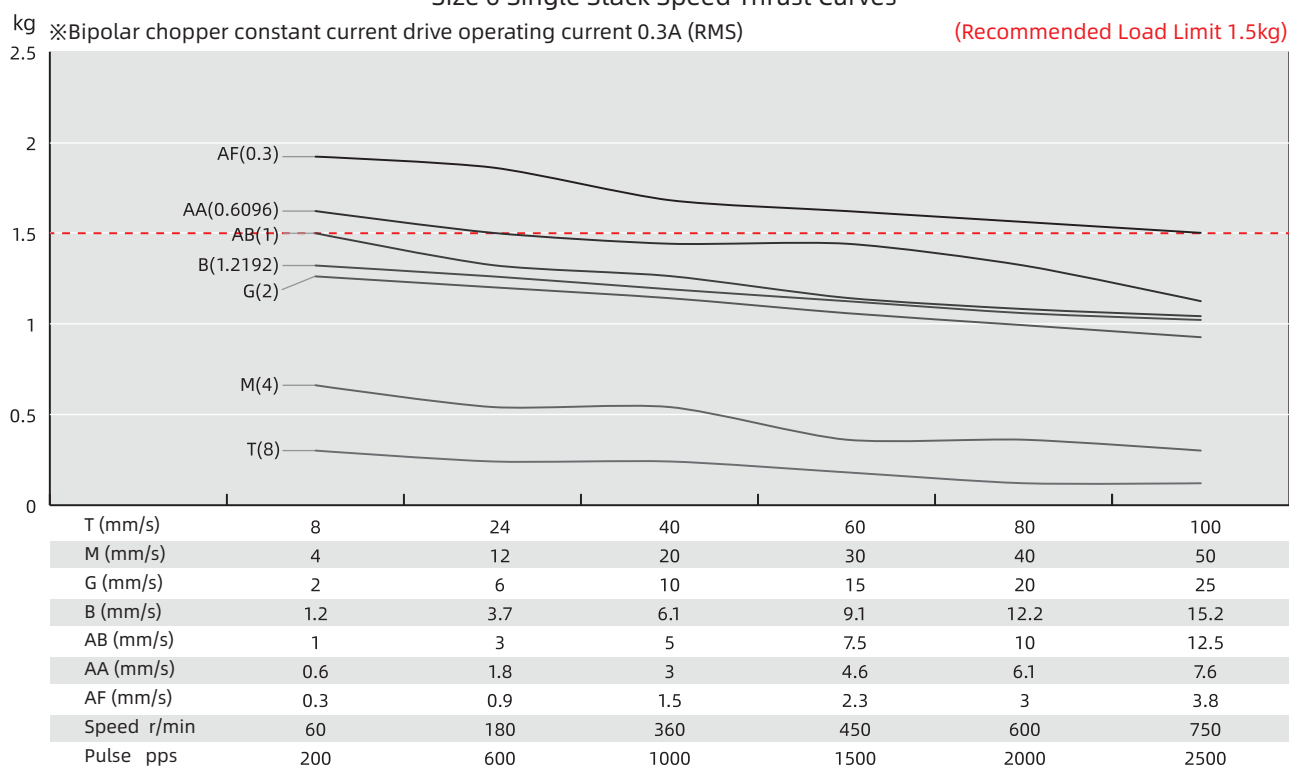


Available Stroke Selection

Size A (mm)	Stroke B (mm)
60	20
80	40
100	60
120	80
140	100

Speed Thrust Curves

Size 6 Single Stack Speed Thrust Curves



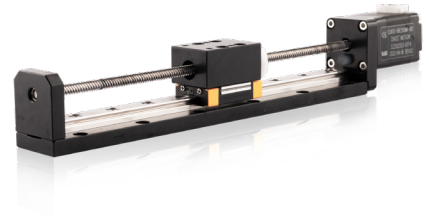
TEST CONDITION

Testing Voltage: 24Vdc, Driver Model: DS-OLS2-FPD bipolar, chopper driver at rated current (rms).
Motor's thrust will be changed with different voltage and driver. 50% thrust margin is recommended.

20mm DLM

Based on DINGS' platform products, high precision of lead screw linear actuator and self-developed simple linear module, DLM 20mm series is compact and reliable structure of linear solution.

DLM 20mm Series is good precision, high diversity of optional stroke and lead based customization linear module which can provide customers with integrated customization solutions.



Motor Characteristics

Motor	Voltage (V)	Current (A [RMS])	Resistance (Ω)	Inductance (mH)	Lead wire No.	Motor length (mm)
8E2105	2.5	0.5	5.1	1.5	4	27.2
8E2205	4.4	0.5	8.8	2.7	4	38.1

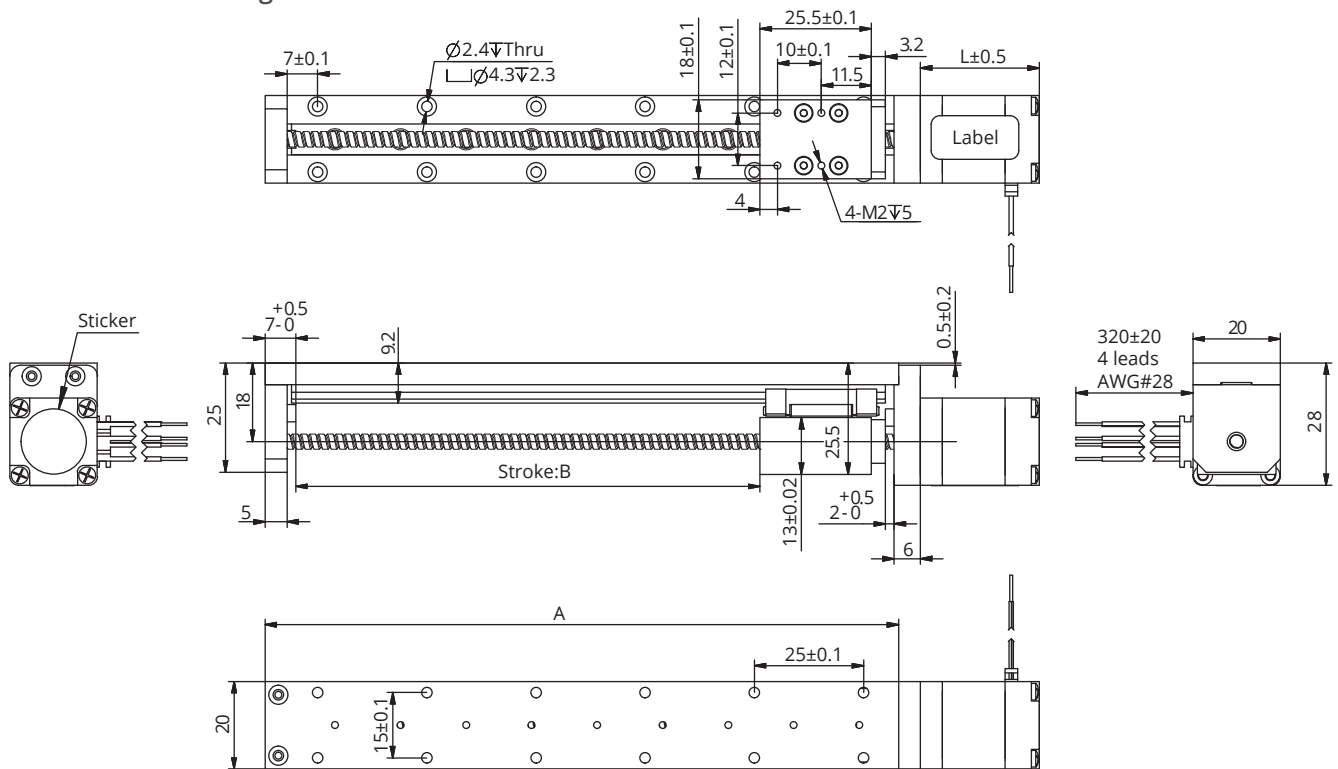
Available Lead Screw and Travel per Step

Screw Dia. (inch)	Screw Dia. (mm)	Lead (inch)	Lead (mm)	Lead Code	Travel Per Step @1.8° (mm)*
0.138	3.5	0.0118	0.3	AF	0.0015
0.138	3.5	0.024	0.6096	AA	0.003048
0.138	3.5	0.0394	1	AB	0.005
0.138	3.5	0.048	1.2192	B	0.006096
0.138	3.5	0.0787	2	G	0.01
0.138	3.5	0.1575	4	M	0.02
0.138	3.5	0.315	8	T	0.04

Mechanical Specifications

Model	C100B(dyn)(N)	Co(stat)(N)	Mro(Nm)	Mpo(Nm)	Myo(Nm)
DLM 20	445	720	2.6	1.65	1.65

■ Dimensional Drawings



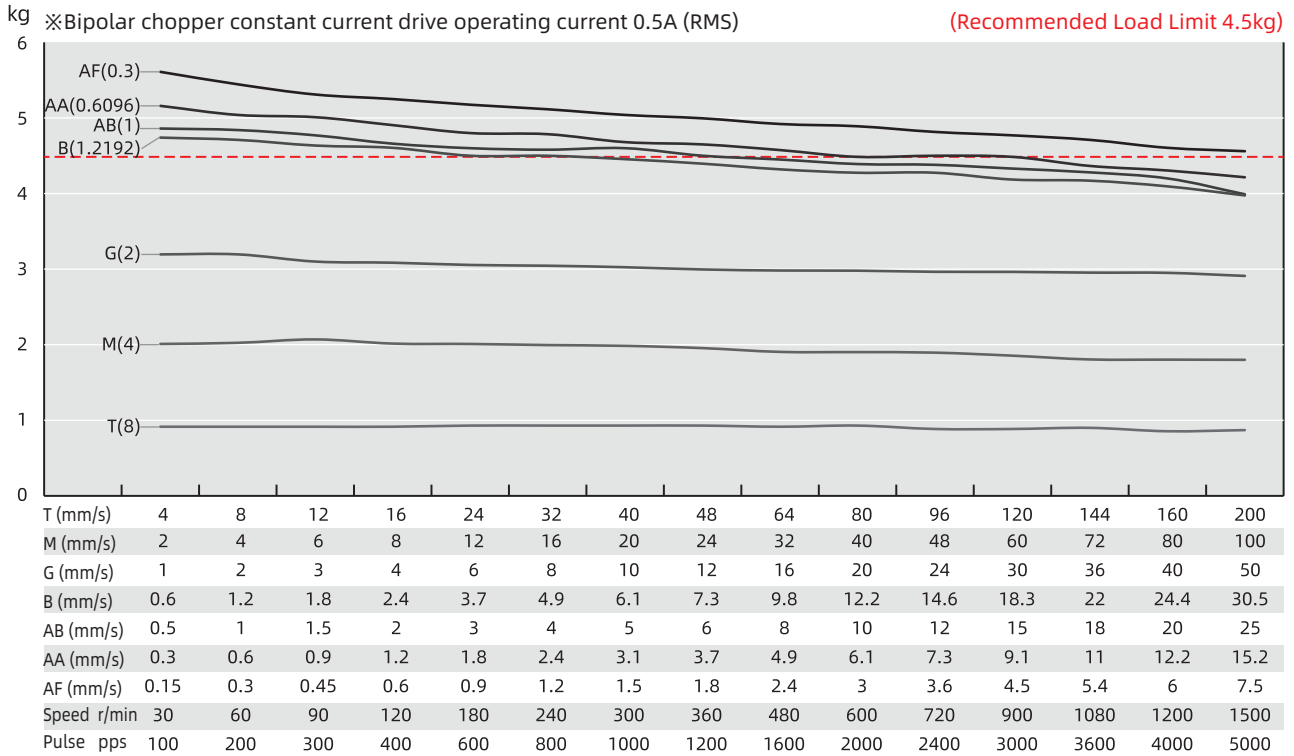
● Available Stroke Selection

Size A (mm)	Stroke B (mm)
60	20
80	40
100	60
120	80
140	100
160	120
190	150

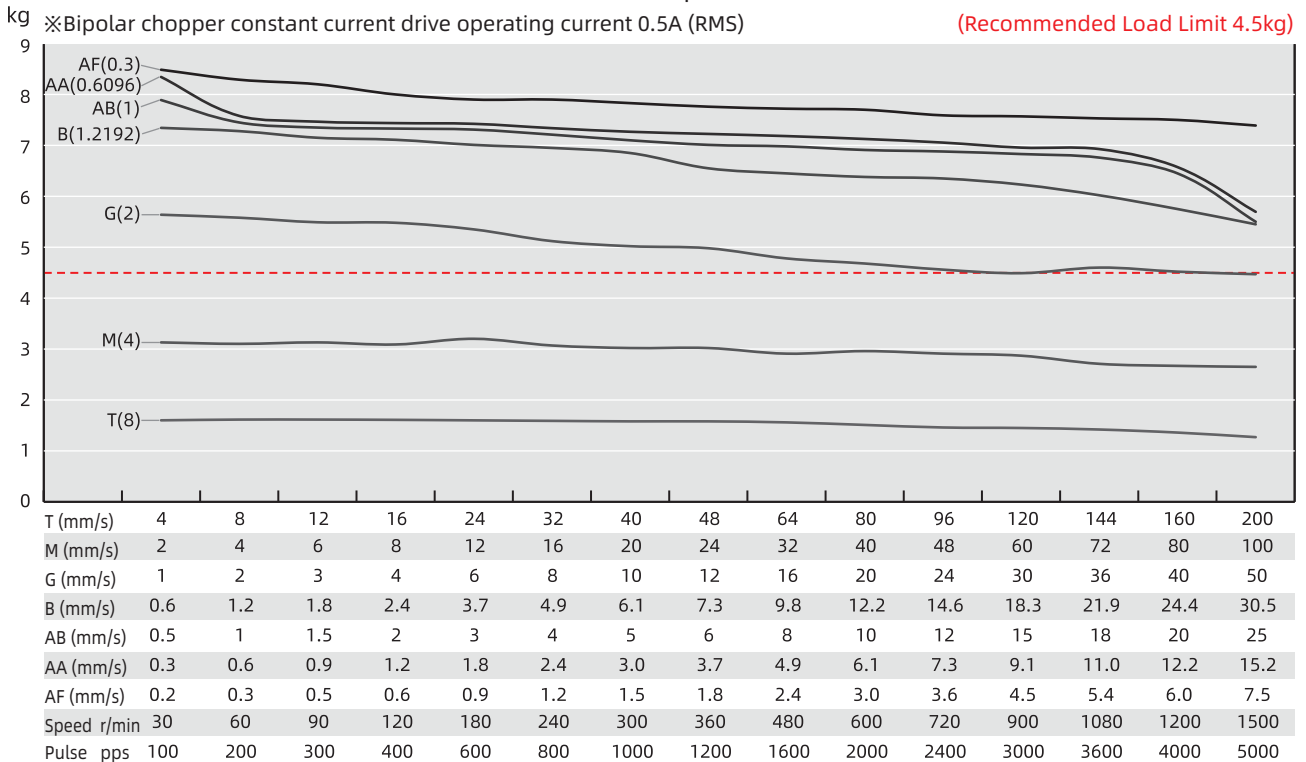
20mm DLM

Speed Thrust Curves

Size 8 Single Stack Speed Thrust Curves



Size 8 Double Stack Speed Thrust Curves



TEST CONDITION

Testing Voltage: 24Vdc, Driver Model: DS-OLS2-FPD bipolar, chopper driver at rated current (rms).

7 Motor's thrust will be changed with different voltage and driver. 50% thrust margin is recommended.

28mm DLM

Based on DINGS' platform products, high precision of lead screw linear actuator and self-developed simple linear module, DLM 28mm series is compact and reliable structure of linear solution.

DLM 28mm Series is good precision, high diversity of optional stroke and lead based customization linear module which can provide customers with integrated customization solutions.



Motor Characteristics

Motor	Voltage (V)	Current (A _{RMS})	Resistance (Ω)	Inductance (mH)	Lead wire No.	Motor length (mm)
11E2105	4.55	0.5	9.1	6.0	4	33.35
11E2110	2.1	1.0	2.1	1.5	4	33.35
11E2209	3.9	0.95	4.1	4.0	4	45
11E2216	2.4	1.6	1.5	1.3	4	45

Available Lead Screw and Travel per Step

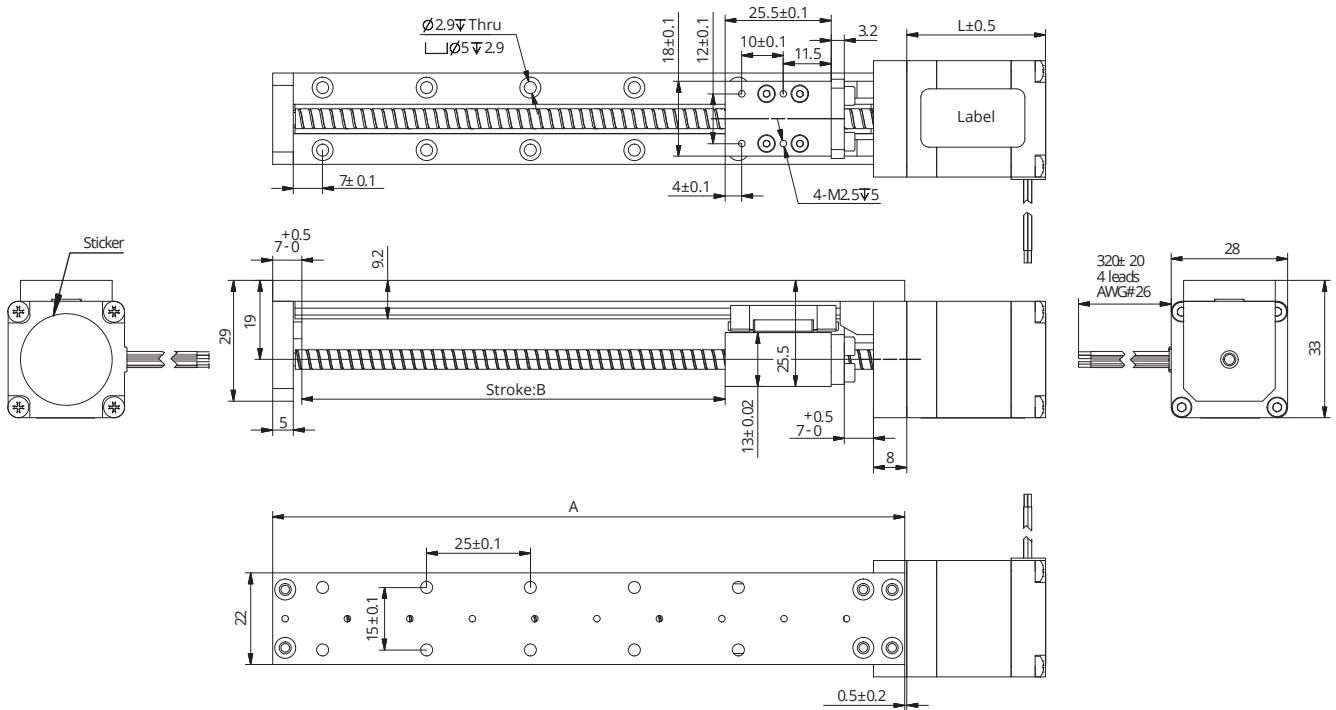
Screw Dia. (inch)	Screw Dia. (mm)	Lead (inch)	Lead (mm)	Lead Code	Travel Per Step @1.8° (mm)*
0.188	4.77	0.0125	0.3175	AL	0.0016
0.188	4.77	0.025	0.635	A	0.003175
0.188	4.77	0.05	1.27	D	0.00635
0.188	4.77	0.1	2.54	K	0.0127
0.188	4.77	0.2	5.08	R	0.0254
0.188	4.77	0.4	10.16	X	0.0508

Mechanical Specifications

Model	C100B(dyn)(N)	Co(stat)(N)	Mro(Nm)	Mpo(Nm)	Myo(Nm)
DLM 28	445	720	2.6	1.65	1.65

28mm DLM

Dimensional Drawings

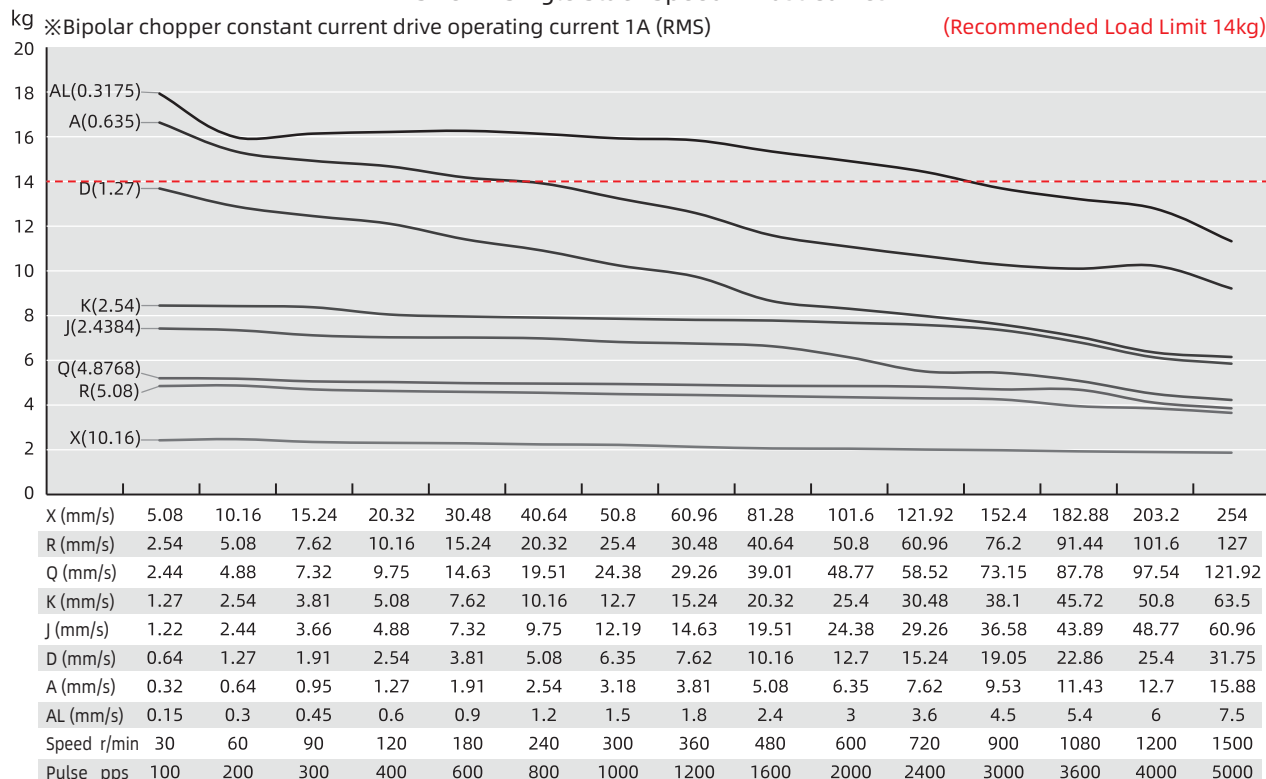


Available Stroke Selection

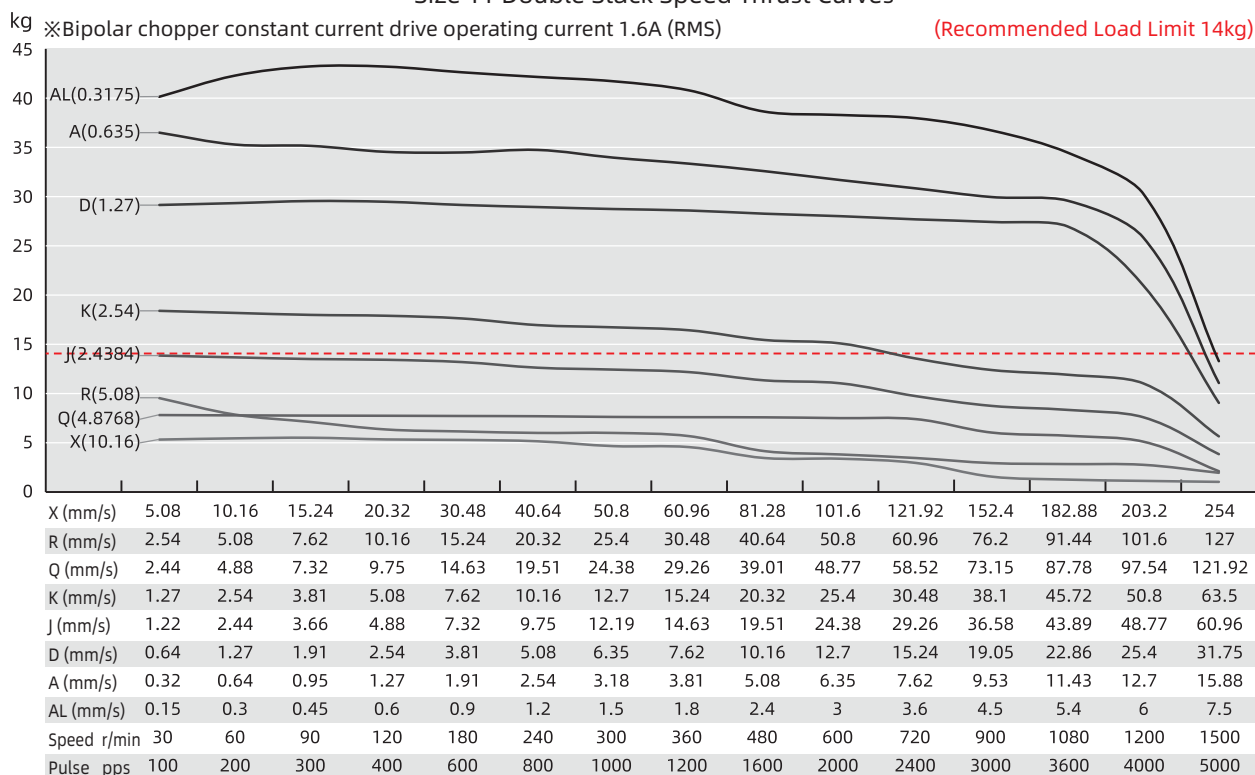
Size A (mm)	Stroke B (mm)
72	20
92	40
112	60
132	80
152	100
202	150
252	200
302	250

Speed Thrust Curves

Size 11 Single Stack Speed Thrust Curves



Size 11 Double Stack Speed Thrust Curves



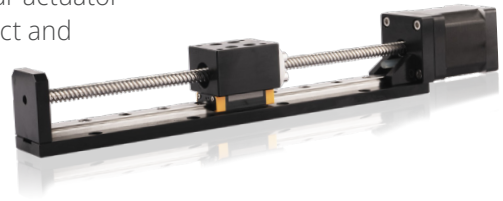
TEST CONDITION

Testing Voltage: 24Vdc, Driver Model: DS-OLS2-FPD bipolar, chopper driver at rated current (rms).
Motor's thrust will be changed with different voltage and driver. 50% thrust margin is recommended.

35mm DLM

Based on DINGS' platform products, high precision of lead screw linear actuator and self-developed simple linear module, DLM 35mm series is compact and reliable structure of linear solution.

DLM 35mm Series is good precision, high diversity of optional stroke and lead based customization linear module which can provide customers with integrated customization solutions.



Motor Characteristics

Motor	Voltage (V)	Current (A _{RMS})	Resistance (Ω)	Inductance (mH)	Lead wire No.	Motor length (mm)
14E2105	6.6	0.5	13.2	14	4	33.6
14E2110	3.5	1.0	3.5	3.6	4	33.6
14E2115	2.7	1.5	1.8	1.9	4	33.6
14E2205	12.0	0.5	24.0	29	4	45.6
14E2210	6.0	1.0	6.0	7.2	4	45.6
14E2215	4.0	1.5	2.7	3.2	4	45.6

Available Lead Screw and Travel per Step

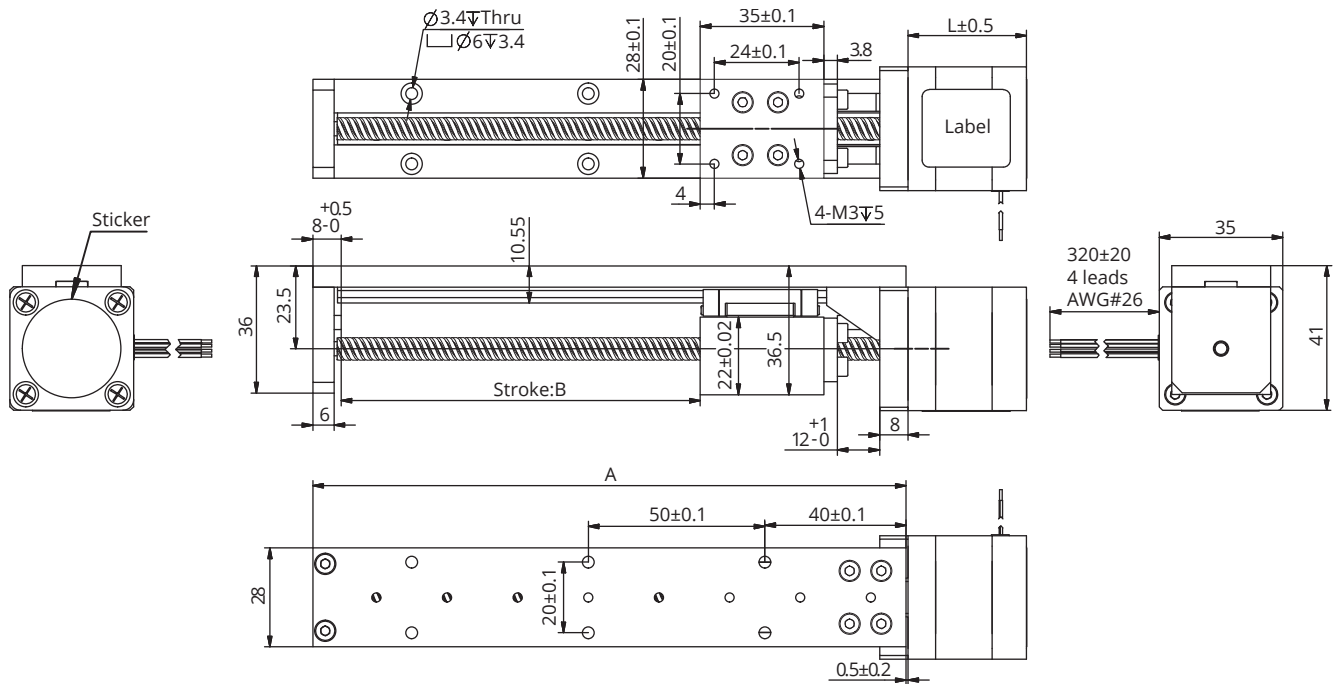
Screw Dia. (inch)	Screw Dia. (mm)	Lead (inch)	Lead (mm)	Lead Code	Travel Per Step @1.8° (mm)*
0.25	6.35	0.024	0.6096	AA	0.003048
0.25	6.35	0.0394	1	AB	0.005
0.25	6.35	0.048	1.2192	B	0.006096
0.25	6.35	0.05	1.27	D	0.00635
0.25	6.35	0.0625	1.5875	F	0.0079
0.25	6.35	0.096	2.4384	J	0.0122
0.25	6.35	0.1	2.54	K	0.0127
0.25	6.35	0.125	3.175	L	0.0159
0.25	6.35	0.192	4.8768	Q	0.024
0.25	6.35	0.2	5.08	R	0.0254
0.25	6.35	0.25	6.35	S	0.0318
0.25	6.35	0.333	8.4667	U	0.0423
0.25	6.35	0.384	9.7536	W	0.0488
0.25	6.35	0.5	12.7	Y	0.0635
0.25	6.35	1	25.4	Z	0.127
0.31	8	0.1575	4	M	0.02
0.31	8	0.315	8	T	0.04
0.31	8	0.0787	2	G	0.01

35mm DLM

Mechanical Specifications

Model	C100B(dyn)(N)	Co(stat)(N)	Mro(Nm)	Mpo(Nm)	Myo(Nm)
DLM 35	785	1247.5	5.85	3.2	3.2

Dimensional Drawings



Available Stroke Selection

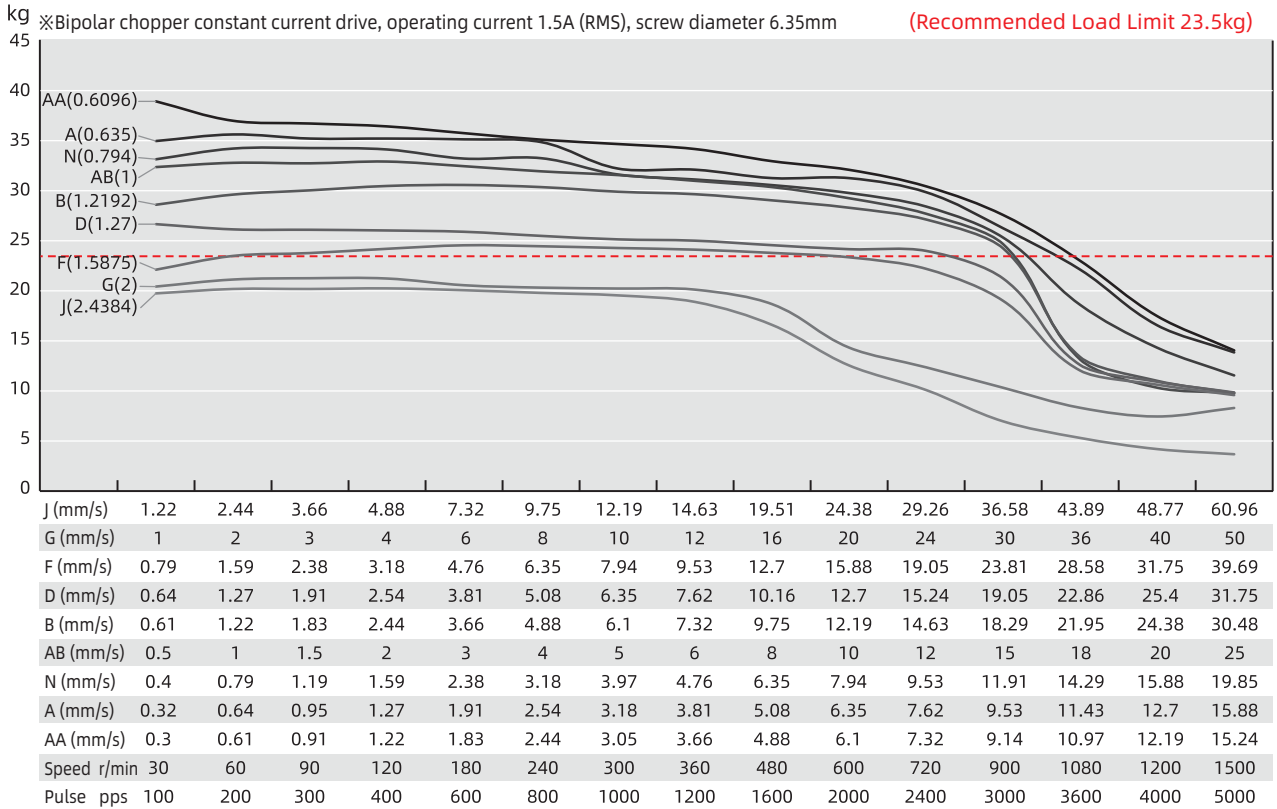
Size A (mm)	Stroke B (mm)
118	50
168	100
218	150
268	200
318	250
368	300
418	350
468	400

Note : All drawings are 1st Angle Projection - ISO Compliant (3D models available)

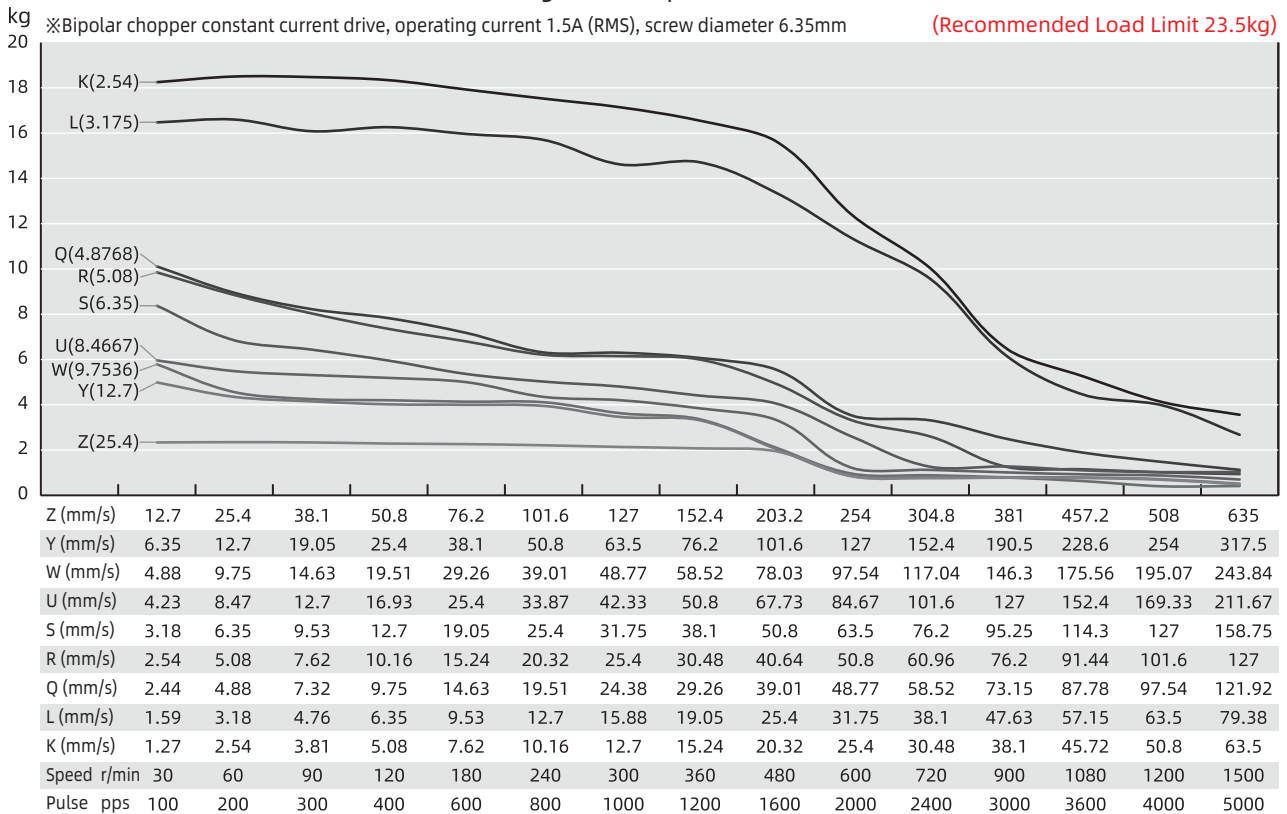
35mm DLM

Speed Thrust Curves

Size 14 Single Stack Speed Thrust Curves



Size 14 Single Stack Speed Thrust Curves

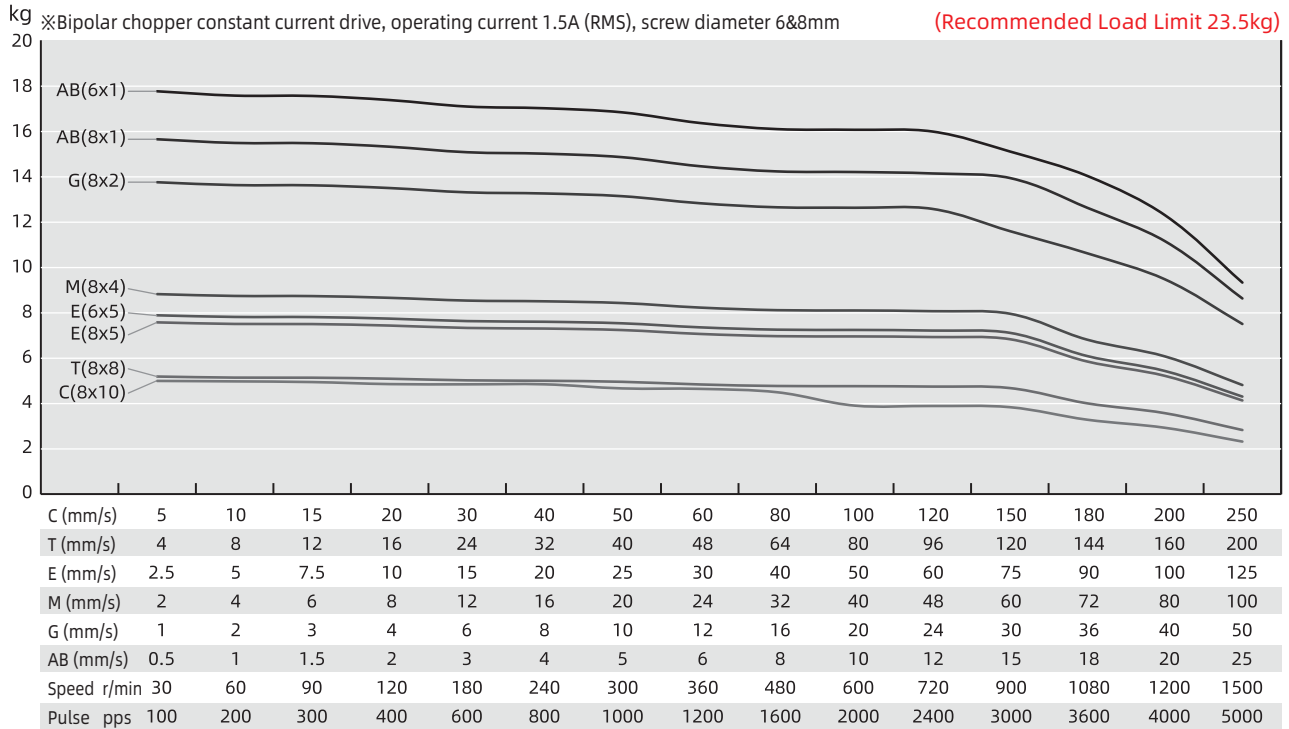


TEST CONDITION

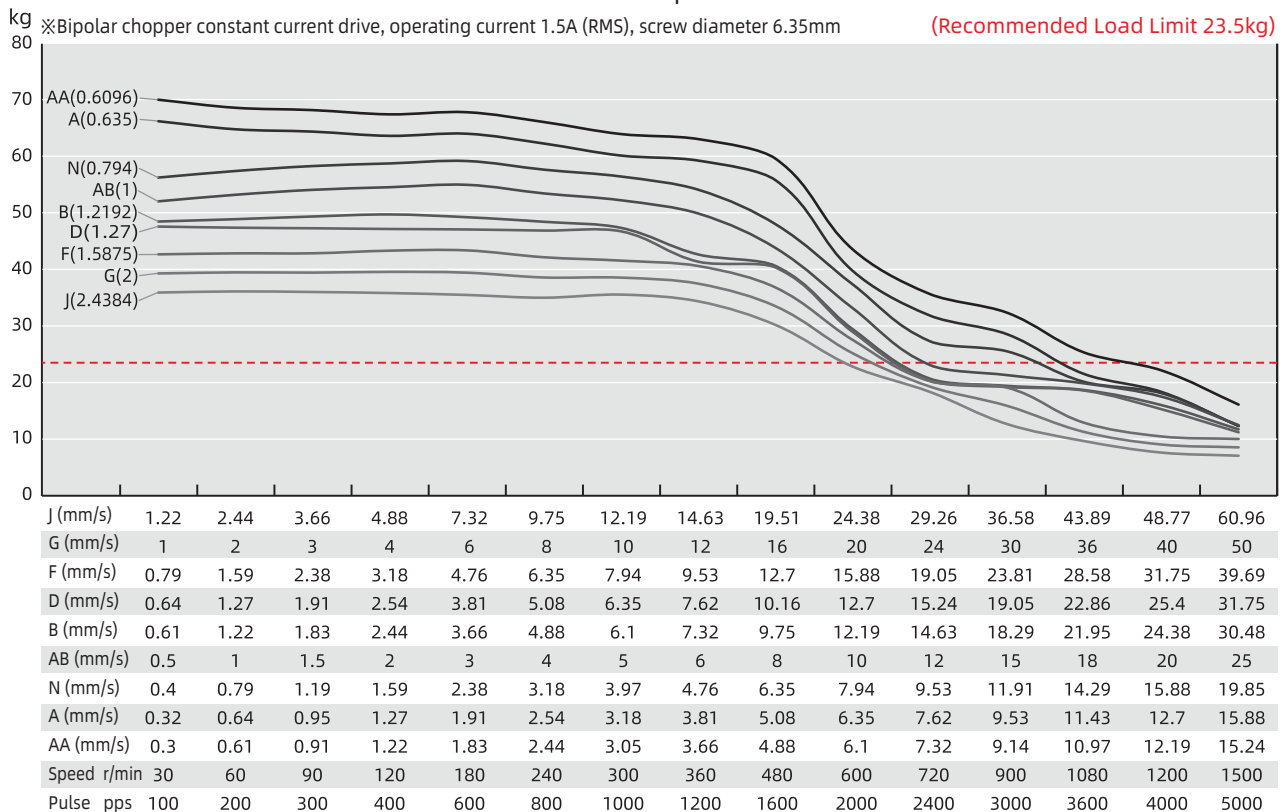
Testing Voltage: 24Vdc, Driver Model: DS-OLS2-FPD bipolar, chopper driver at rated current (rms).
Motor's thrust will be changed with different voltage and driver. 50% thrust margin is recommended.

35mm DLM

Size 14 Single Stack Speed Thrust Curves



Size 14 Double Stack Speed Thrust Curves

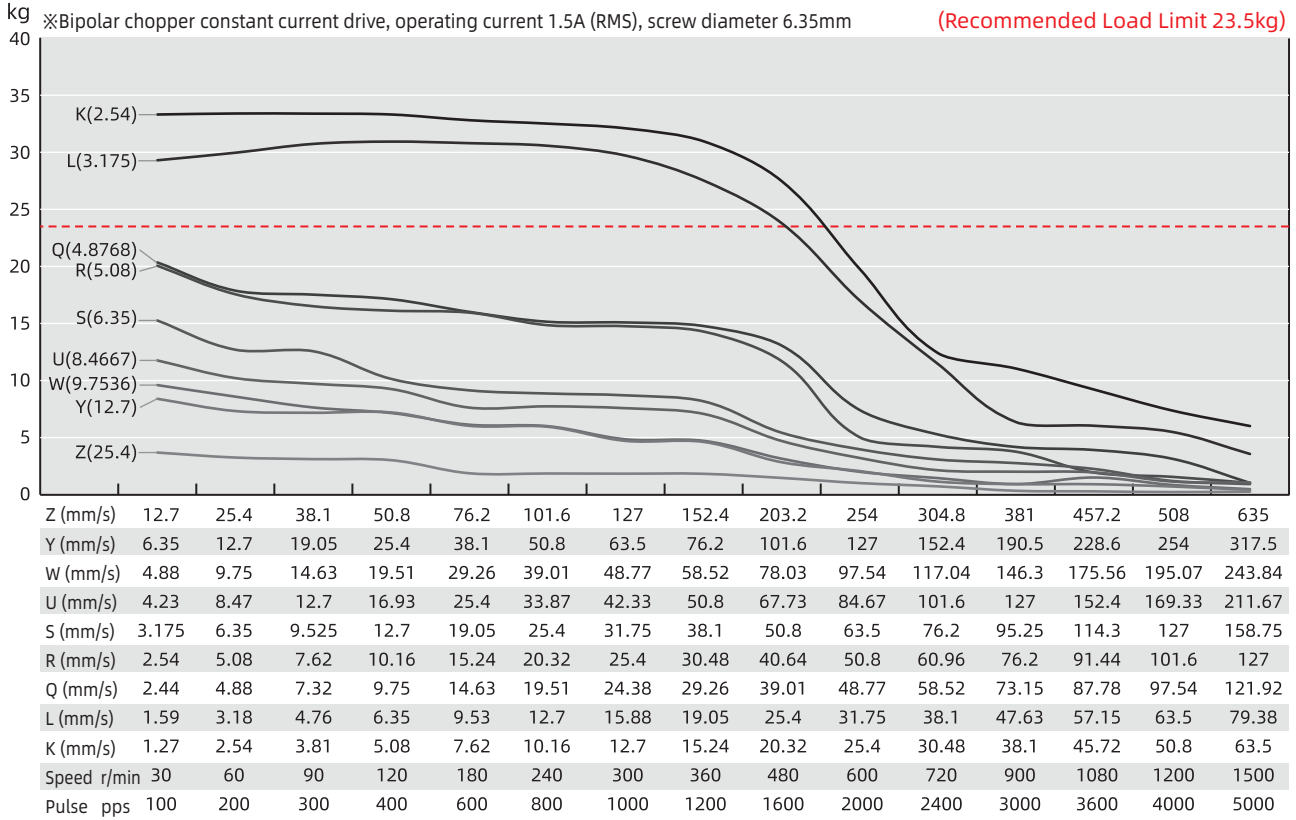


TEST CONDITION

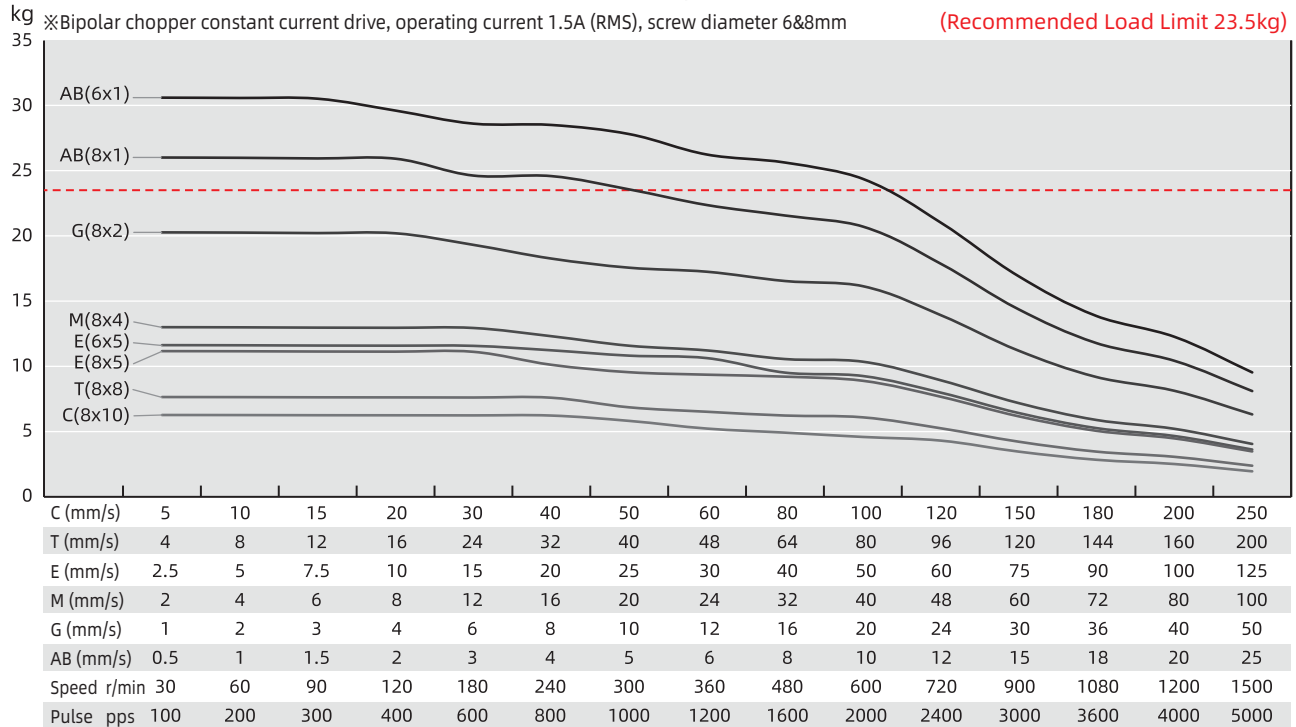
Testing Voltage: 24Vdc, Driver Model: DS-OLS2-FPD bipolar, chopper driver at rated current (rms).
Motor's thrust will be changed with different voltage and driver. 50% thrust margin is recommended.

35mm DLM

Size 14 Double Stack Speed Thrust Curves



Size 14 Double Stack Speed Thrust Curves



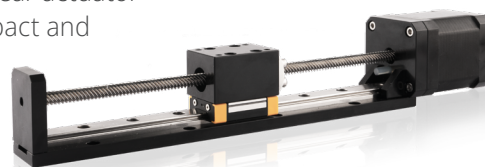
TEST CONDITION

Testing Voltage: 24Vdc, Driver Model: DS-OLS2-FPD bipolar, chopper driver at rated current (rms).
Motor's thrust will be changed with different voltage and driver. 50% thrust margin is recommended.

42mm DLM

Based on DINGS' platform products, high precision of lead screw linear actuator and self-developed simple linear module, DLM 42mm series is compact and reliable structure of linear solution.

DLM 42mm Series is good precision, high diversity of optional stroke and lead based customization linear module which can provide customers with integrated customization solutions.



Motor Characteristics

Motor	Voltage (V)	Current (A _{RMS})	Resistance (Ω)	Inductance (mH)	Lead wire No.	Motor length (mm)
17E2105	7.2	0.5	14.4	19.8	4	34.1
17E2110	3.8	1.0	3.8	5.0	4	34.1
17E2115	2.85	1.5	1.9	2.2	4	34.1
17E2205	11.0	0.5	22	46	4	48.1
17E2212	4.5	1.2	3.8	8.0	4	48.1
17E2225	2.5	2.5	1.0	1.8	4	48.1

Available Lead Screw and Travel per Step

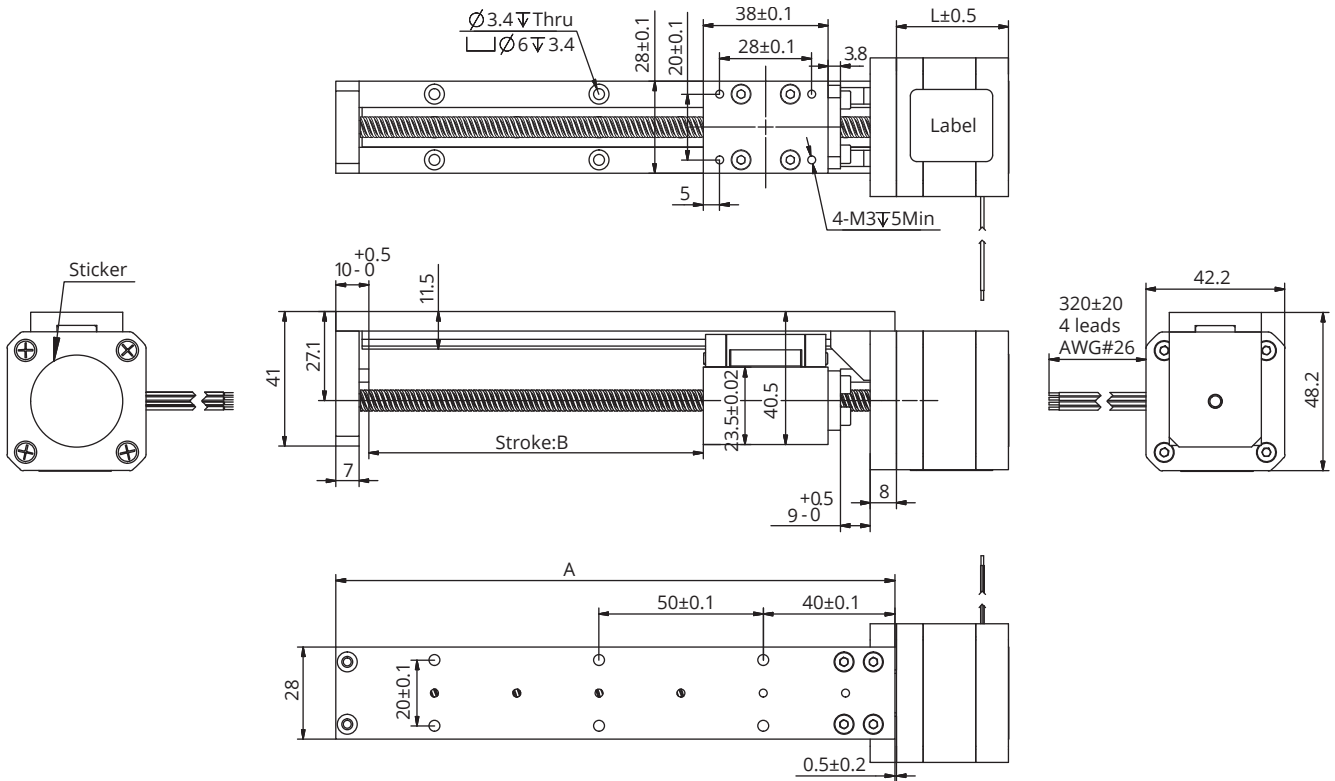
Screw Dia. (inch)	Screw Dia. (mm)	Lead (inch)	Lead (mm)	Lead Code	Travel Per Step @1.8° (mm)*
0.25	6.35	0.024	0.6096	AA	0.003048
0.25	6.35	0.0394	1	AB	0.005
0.25	6.35	0.048	1.2192	B	0.006096
0.25	6.35	0.05	1.27	D	0.00635
0.25	6.35	0.0625	1.5875	F	0.0079
0.25	6.35	0.096	2.4384	J	0.0122
0.25	6.35	0.1	2.54	K	0.0127
0.25	6.35	0.125	3.175	L	0.0159
0.25	6.35	0.192	4.8768	Q	0.024
0.25	6.35	0.2	5.08	R	0.0254
0.25	6.35	0.25	6.35	S	0.0318
0.25	6.35	0.333	8.4667	U	0.0423
0.25	6.35	0.384	9.7536	W	0.0488
0.25	6.35	0.5	12.7	Y	0.0635
0.25	6.35	1	25.4	Z	0.127
0.31	8	0.1575	4	M	0.02
0.31	8	0.315	8	T	0.04
0.31	8	0.0787	2	G	0.01

42mm DLM

Mechanical Specifications

Model	C100B(dyn)(N)	Co(stat)(N)	Mro(Nm)	Mpo(Nm)	Myo(Nm)
DLM 42	1154	1732.5	10.75	6.45	6.45

Dimensional Drawings



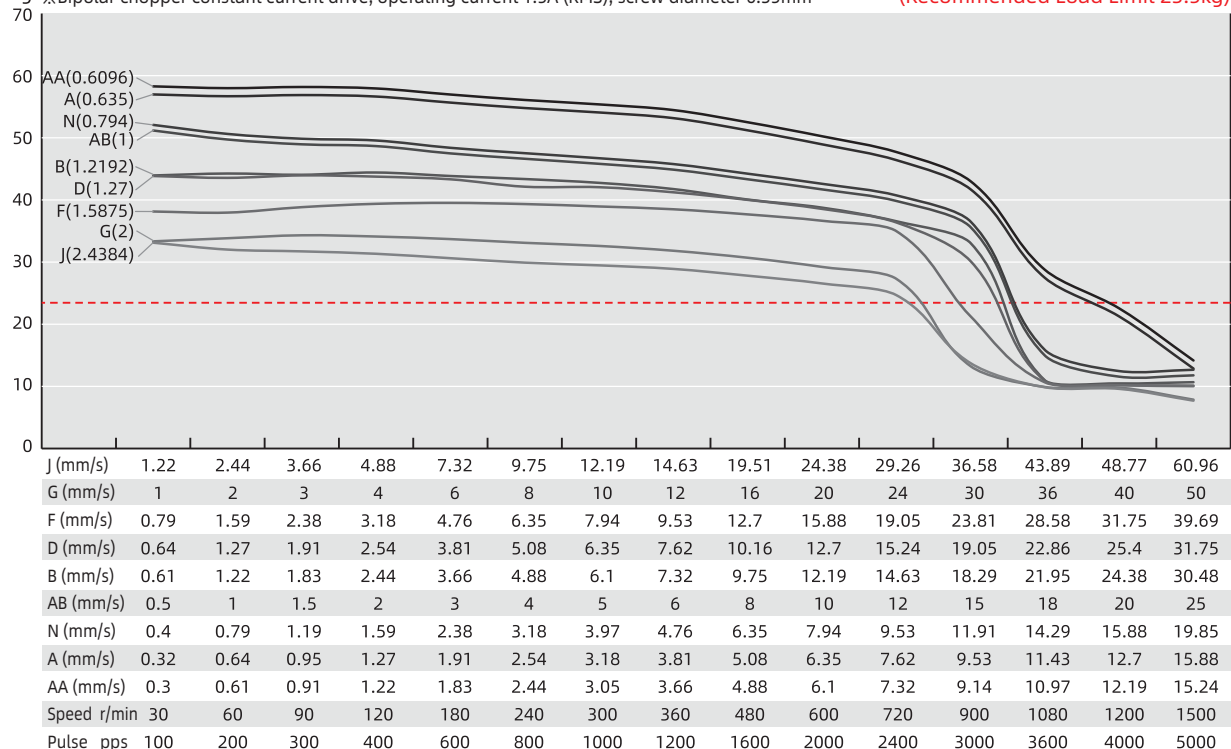
Available Stroke Selection

Size A (mm)	Stroke B (mm)
120	50
170	100
220	150
270	200
320	250
370	300
420	350
470	400
520	450
570	500

Speed Thrust Curves

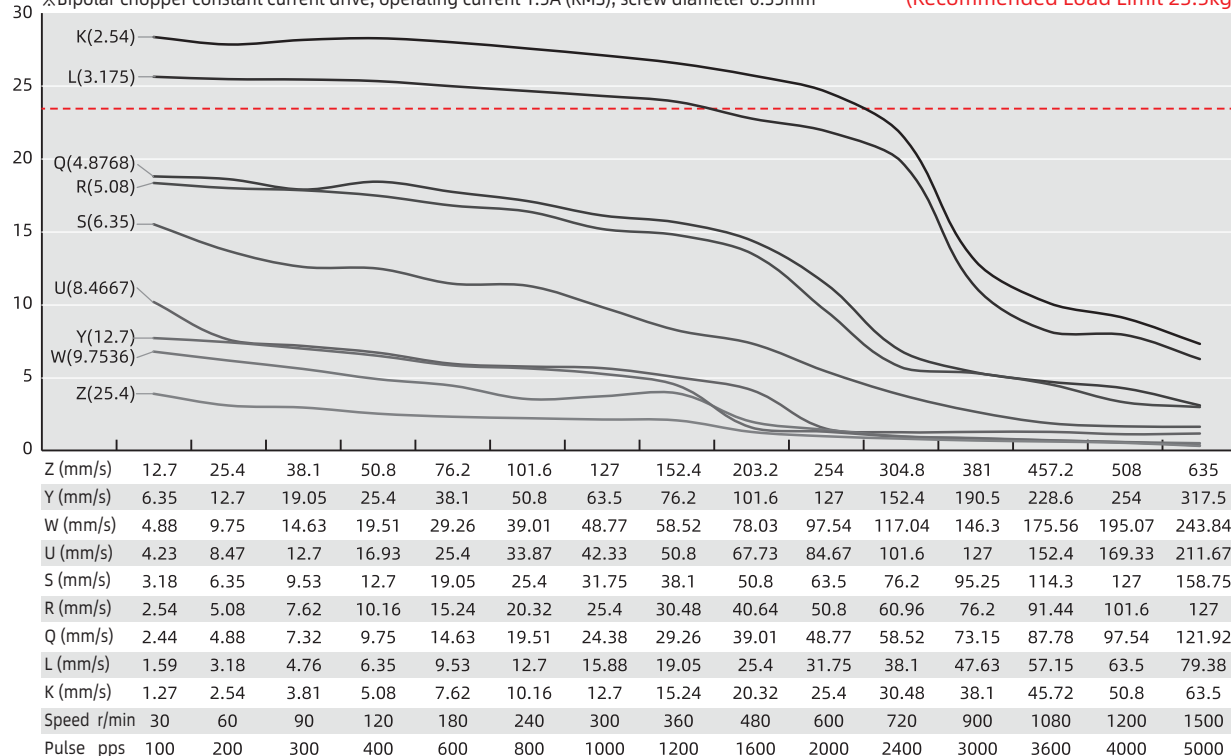
Size 17 Single Stack Speed Thrust Curves

kg ※Bipolar chopper constant current drive, operating current 1.5A (RMS), screw diameter 6.35mm (Recommended Load Limit 23.5kg)



Size 17 Single Stack Speed Thrust Curves

kg ※Bipolar chopper constant current drive, operating current 1.5A (RMS), screw diameter 6.35mm (Recommended Load Limit 23.5kg)

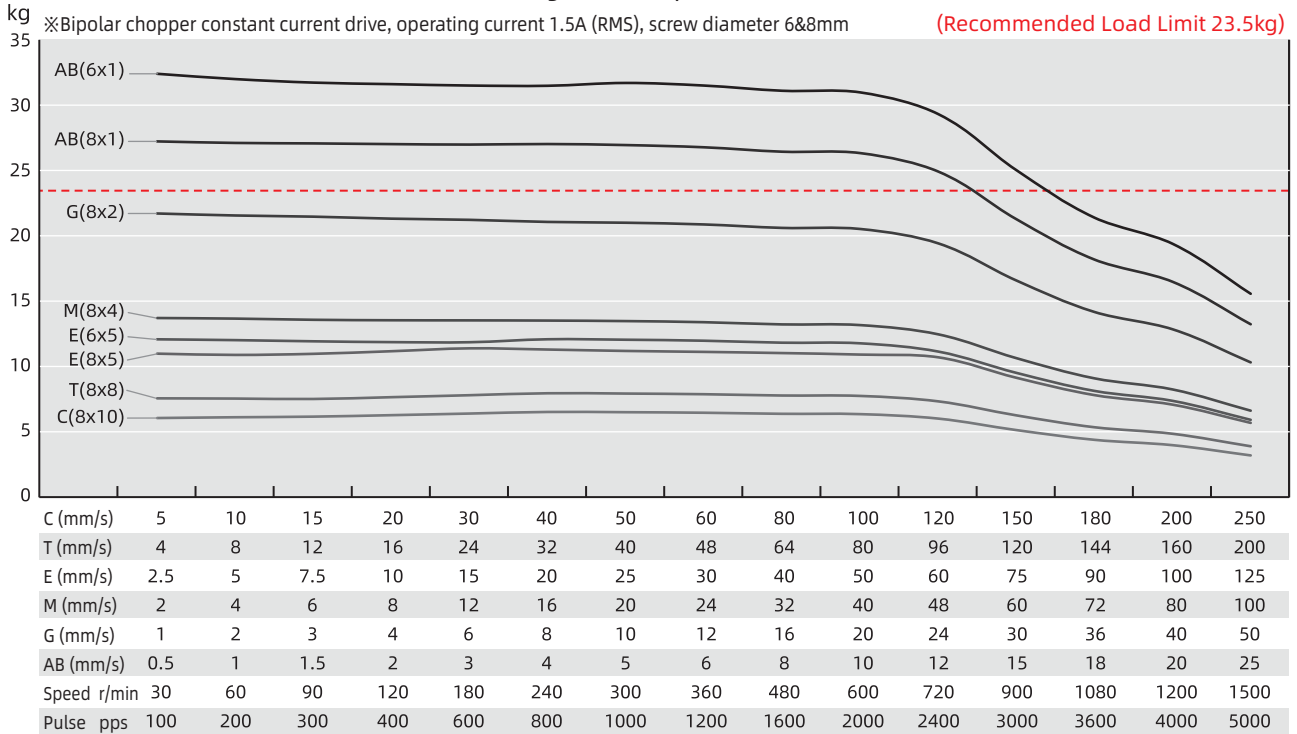


TEST CONDITION

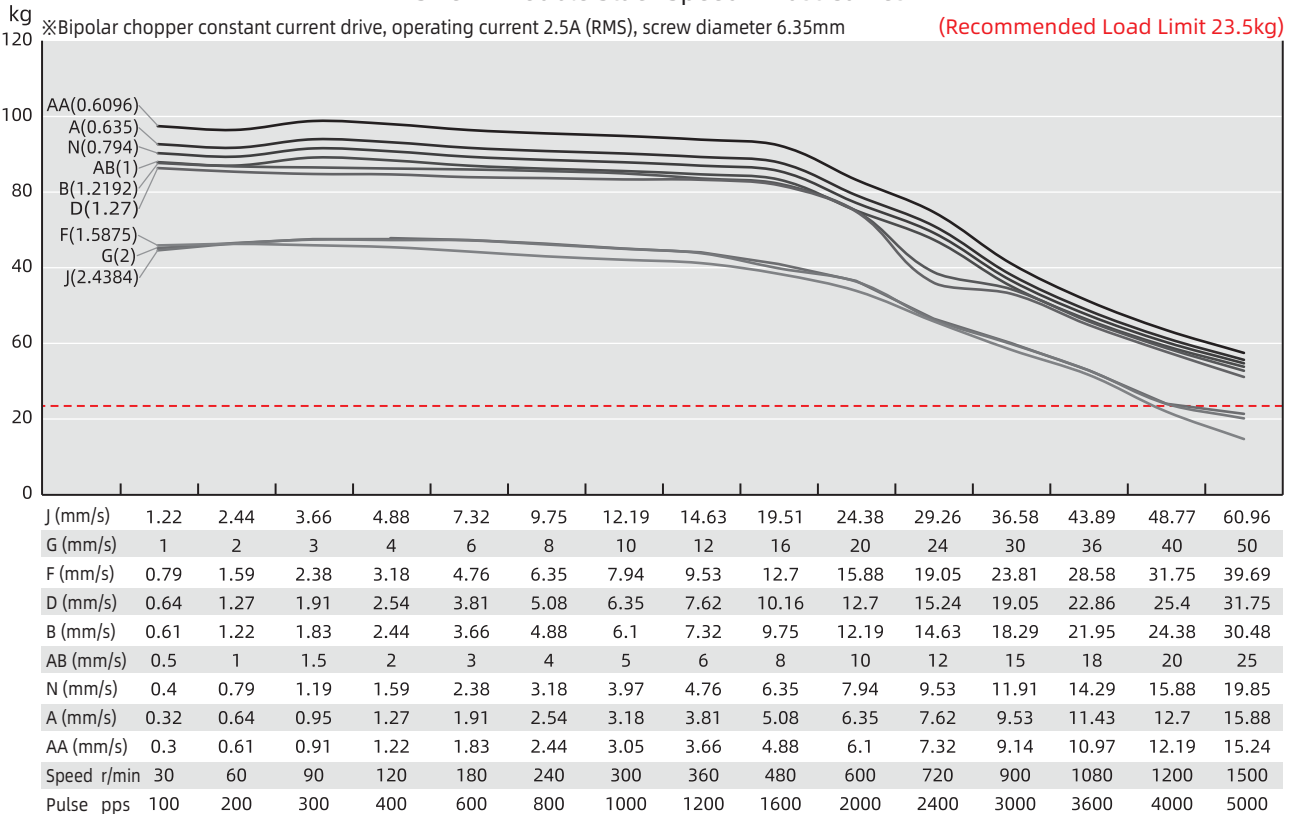
Testing Voltage: 24Vdc, Driver Model: DS-OLS2-FPD bipolar, chopper driver at rated current (rms). Motor's thrust will be changed with different voltage and driver. 50% thrust margin is recommended.

42mm DLM

Size 17 Single Stack Speed Thrust Curves



Size 17 Double Stack Speed Thrust Curves



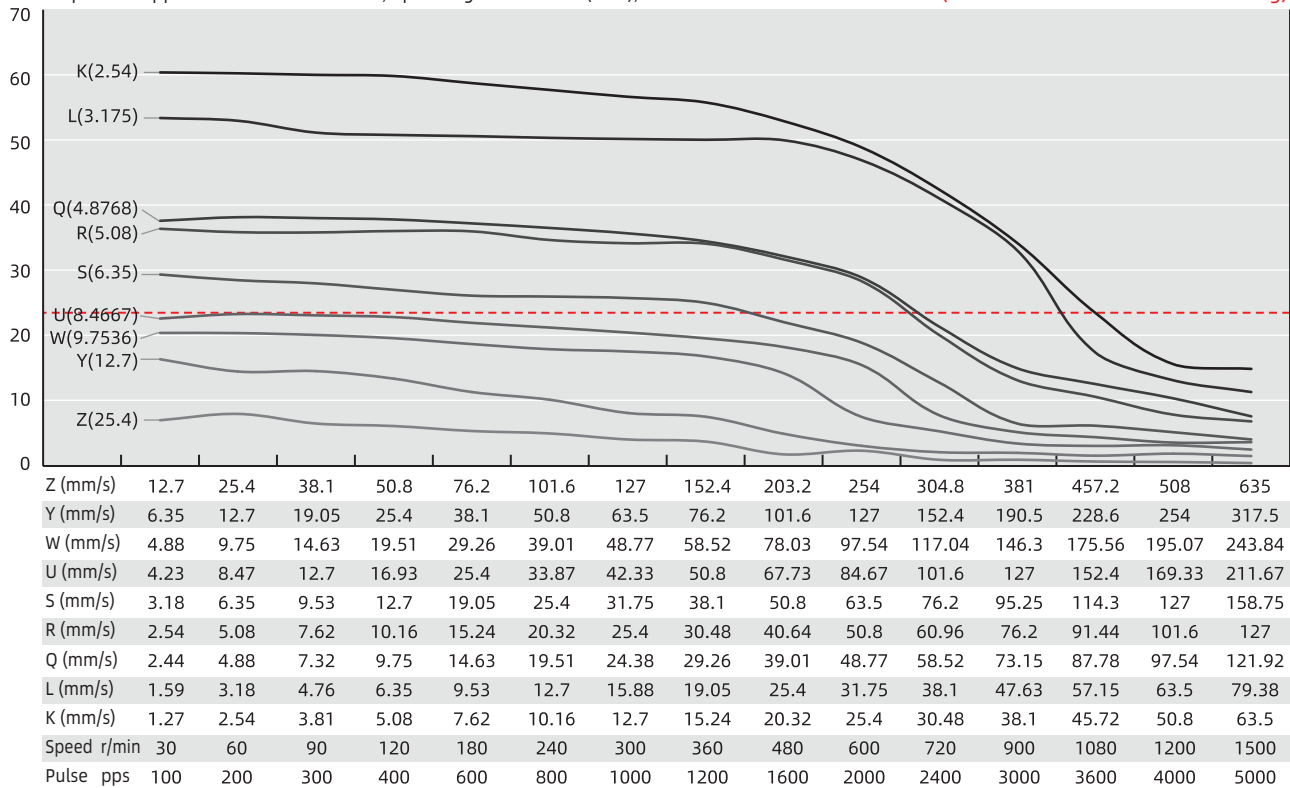
TEST CONDITION

Testing Voltage: 24Vdc, Driver Model: DS-OLS2-FPD bipolar, chopper driver at rated current (rms).

19 Motor's thrust will be changed with different voltage and driver. 50% thrust margin is recommended.

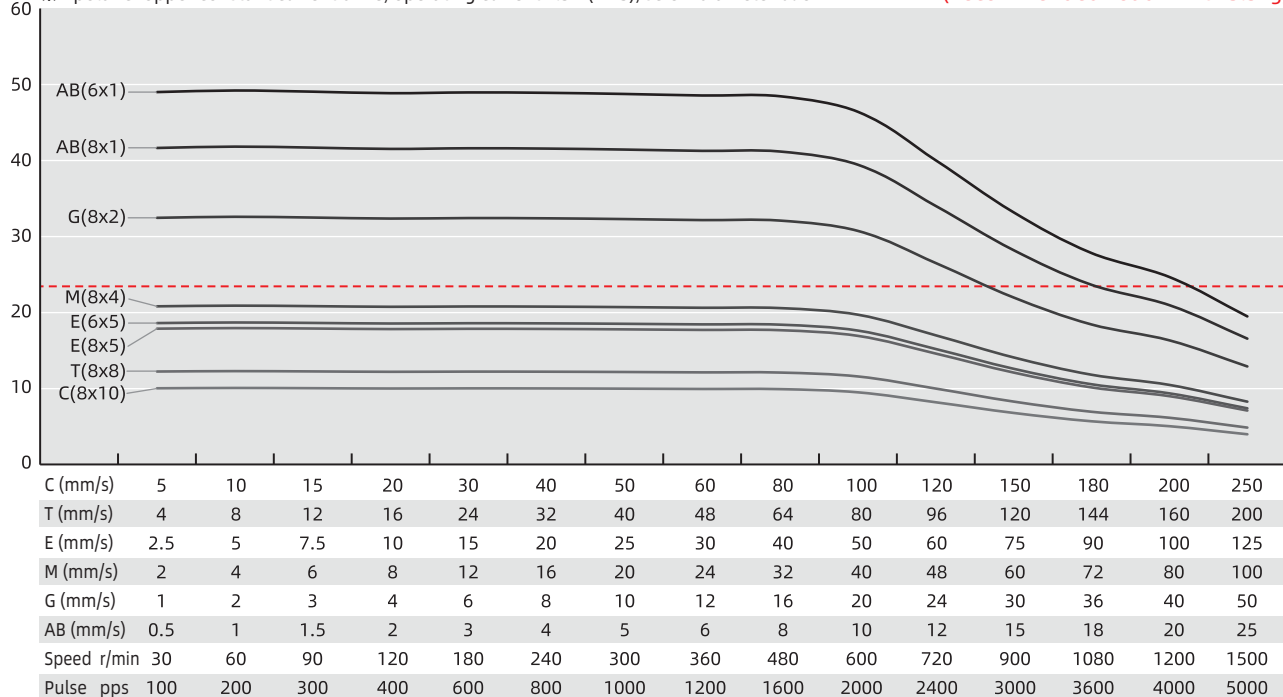
Size 17 Double Stack Speed Thrust Curves

※Bipolar chopper constant current drive, operating current 2.5A (RMS), screw diameter 6.35mm (Recommended Load Limit 23.5kg)



Size 17 Double Stack Speed Thrust Curves

※Bipolar chopper constant current drive, operating current 2.5A (RMS), screw diameter 6&8mm (Recommended Load Limit 23.5kg)



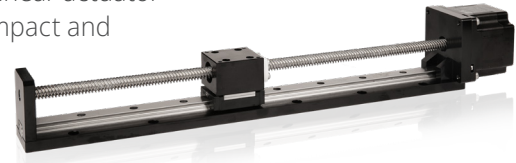
TEST CONDITION

Testing Voltage: 24Vdc, Driver Model: DS-OLS2-FPD bipolar, chopper driver at rated current (rms).
Motor's thrust will be changed with different voltage and driver. 50% thrust margin is recommended.

57mm DLM

Based on DINGS' platform products, high precision of lead screw linear actuator and self-developed simple linear module, DLM 57mm series is compact and reliable structure of linear solution.

DLM 57mm Series is good precision, high diversity of optional stroke and lead based customization linear module which can provide customers with integrated customization solutions.



Motor Characteristics

Motor	Voltage (V)	Current (A _{RMS})	Resistance (Ω)	Inductance (mH)	Lead wire No.	Motor length (mm)
23E2110	6.4	1.0	6.4	16.4	4	45
23E2120	3.2	2.0	1.75	4.1	4	45
23E2130	2.4	3.0	0.8	1.7	4	45
23E2210	10.8	1.0	11.5	32	4	65
23E2225	4.2	2.5	2.0	5.2	4	65
23E2240	2.8	4.0	0.7	2.0	4	65

Available Lead Screw and Travel per Step

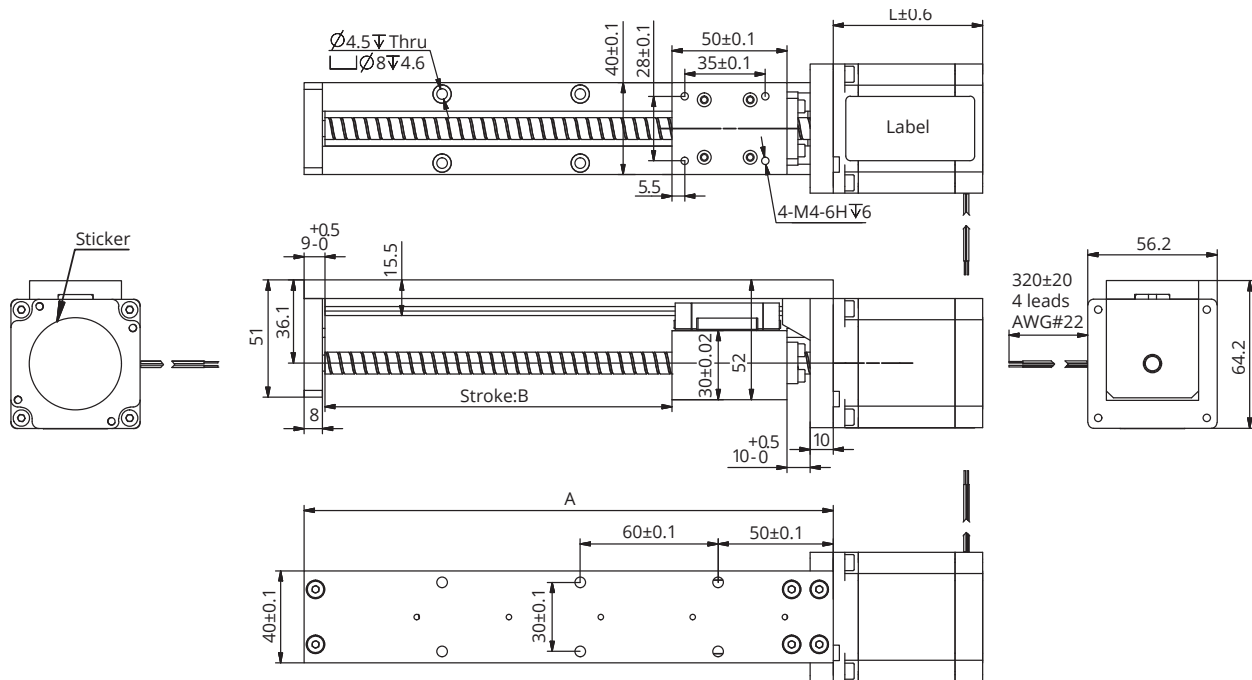
Screw Dia. (inch)	Screw Dia. (mm)	Lead (inch)	Lead (mm)	Lead Code	Travel Per Step @1.8° (mm)*
0.394	10	0.079	2	G	0.005
0.375	9.525	0.025	0.635	A	0.0016
0.375	9.525	0.05	1.27	D	0.0032
0.375	9.525	0.0625	1.5875	F	0.004
0.375	9.525	0.083	2.1167	H	0.0053
0.375	9.525	0.1	2.54	K	0.0064
0.375	9.525	0.125	3.175	L	0.0079
0.375	9.525	0.167	4.233	P	0.0106
0.375	9.525	0.2	5.08	R	0.0127
0.375	9.525	0.25	6.35	S	0.0159
0.375	9.525	0.375	9.525	V	0.0238
0.375	9.525	0.384	9.7536	W	0.0244
0.375	9.525	0.4	10.16	X	0.0254
0.375	9.525	0.5	12.7	Y	0.0318
0.375	9.525	1	25.4	Z	0.0635

57mm DLM

Mechanical Specifications

Model	C100B(dyn)(N)	Co(stat)(N)	Mro(Nm)	Mpo(Nm)	Myo(Nm)
DLM 57	1905	2795	21.8	13.5	13.5

Dimensional Drawings



Available Stroke Selection

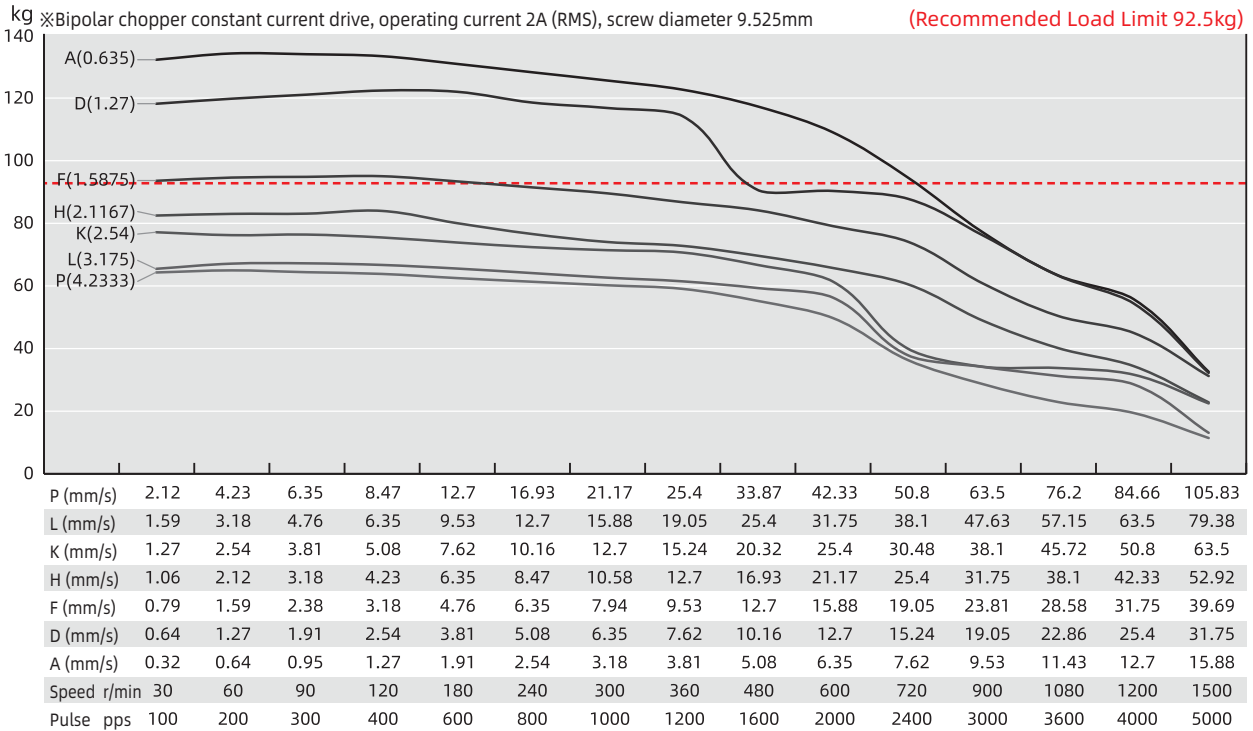
Size A (mm)	Stroke B (mm)
130	50
180	100
230	150
280	200
330	250
380	300
430	350
480	400
530	450
580	500
630	550
680	600

Note : All drawings are 1st Angle Projection - ISO Compliant (3D models available)

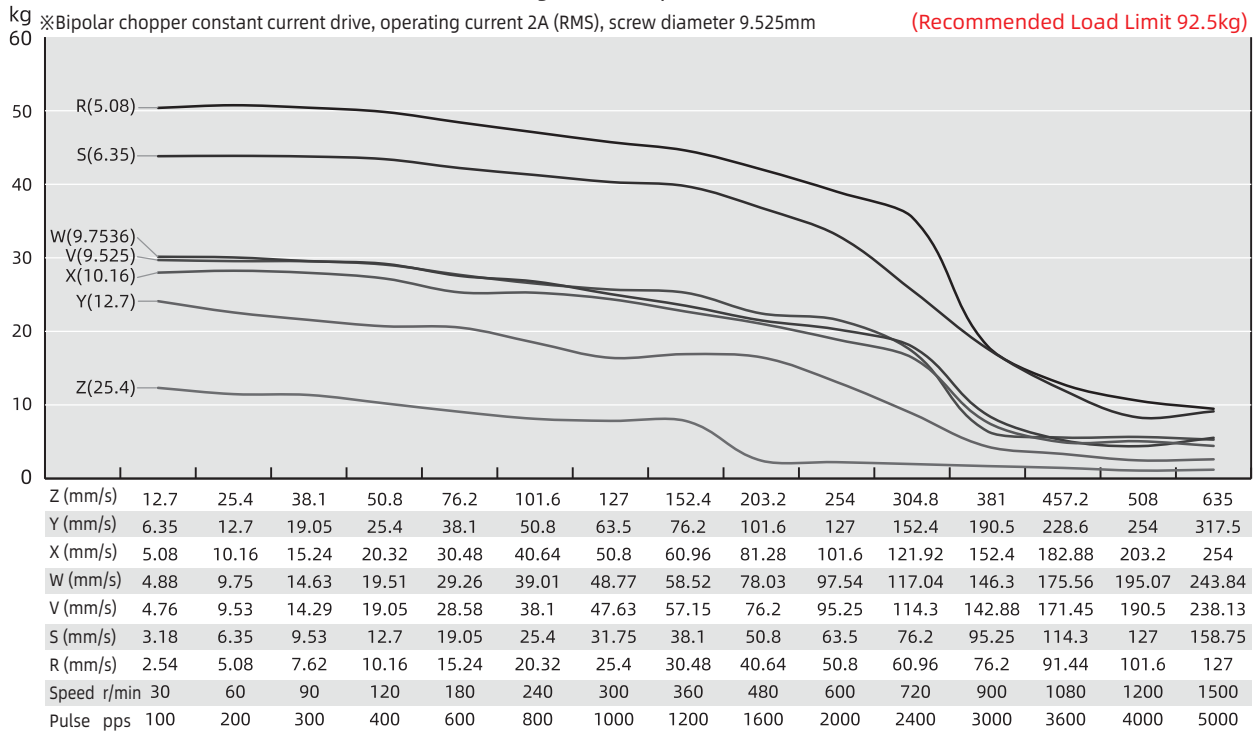
57mm DLM

Speed Thrust Curves

Size 23 Single Stack Speed Thrust Curves



Size 23 Single Stack Speed Thrust Curves



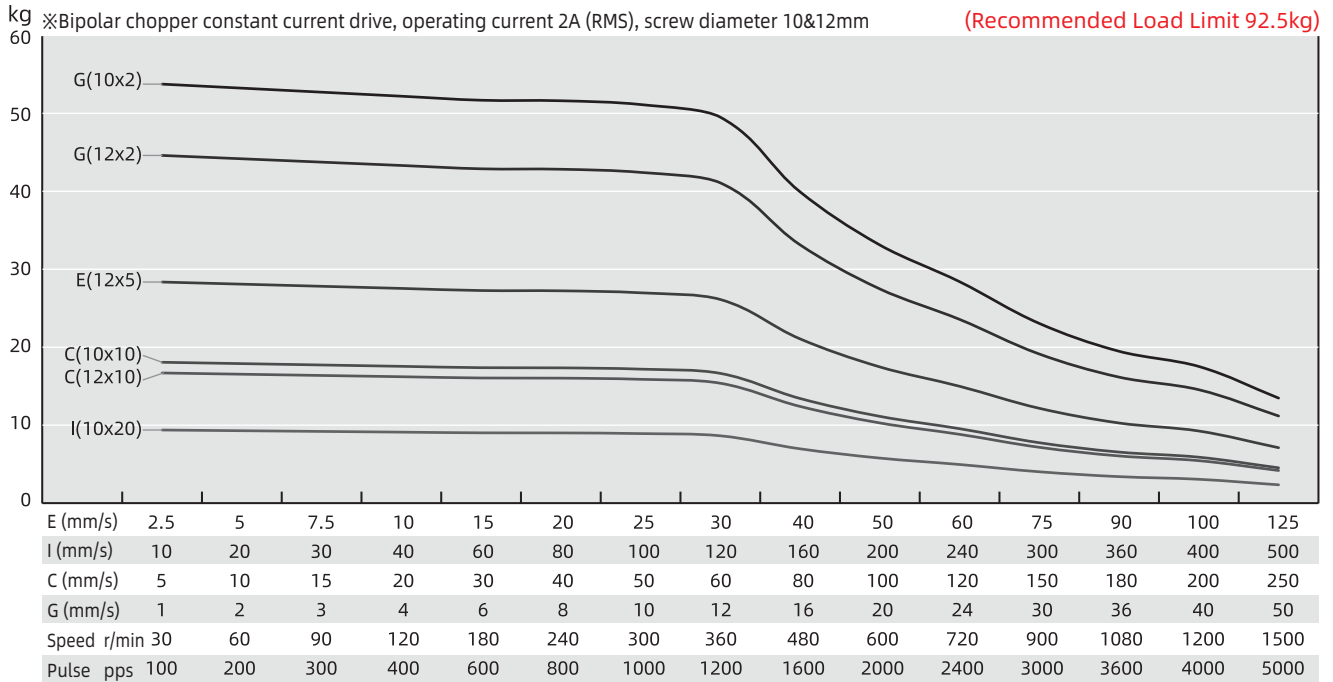
TEST CONDITION

Testing Voltage: 48Vdc, Driver Model: DS-OLS4-FPD bipolar, chopper driver at rated current (rms).

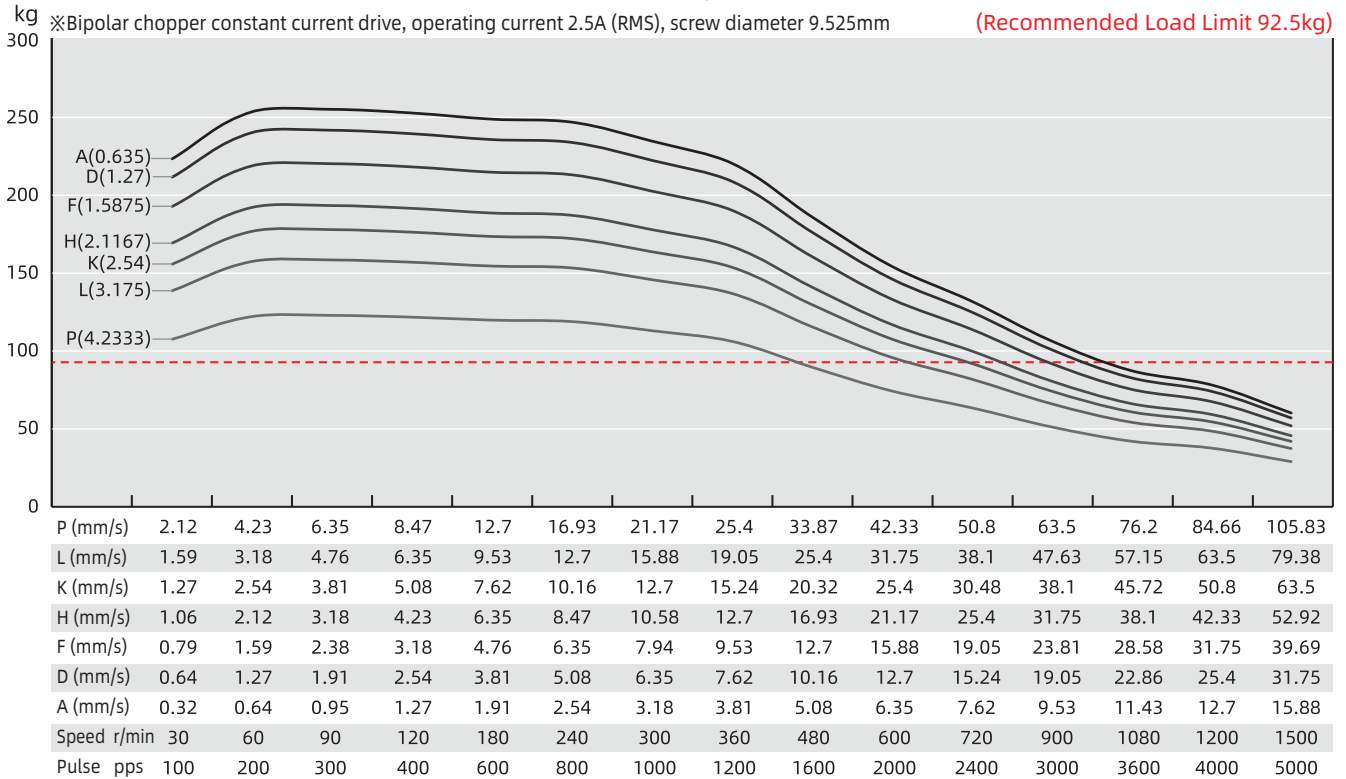
Motor's thrust will be changed with different voltage and driver. 50% thrust margin is recommended.

57mm DLM

Size 23 Single Stack Speed Thrust Curves



Size 23 Double Stack Speed Thrust Curves

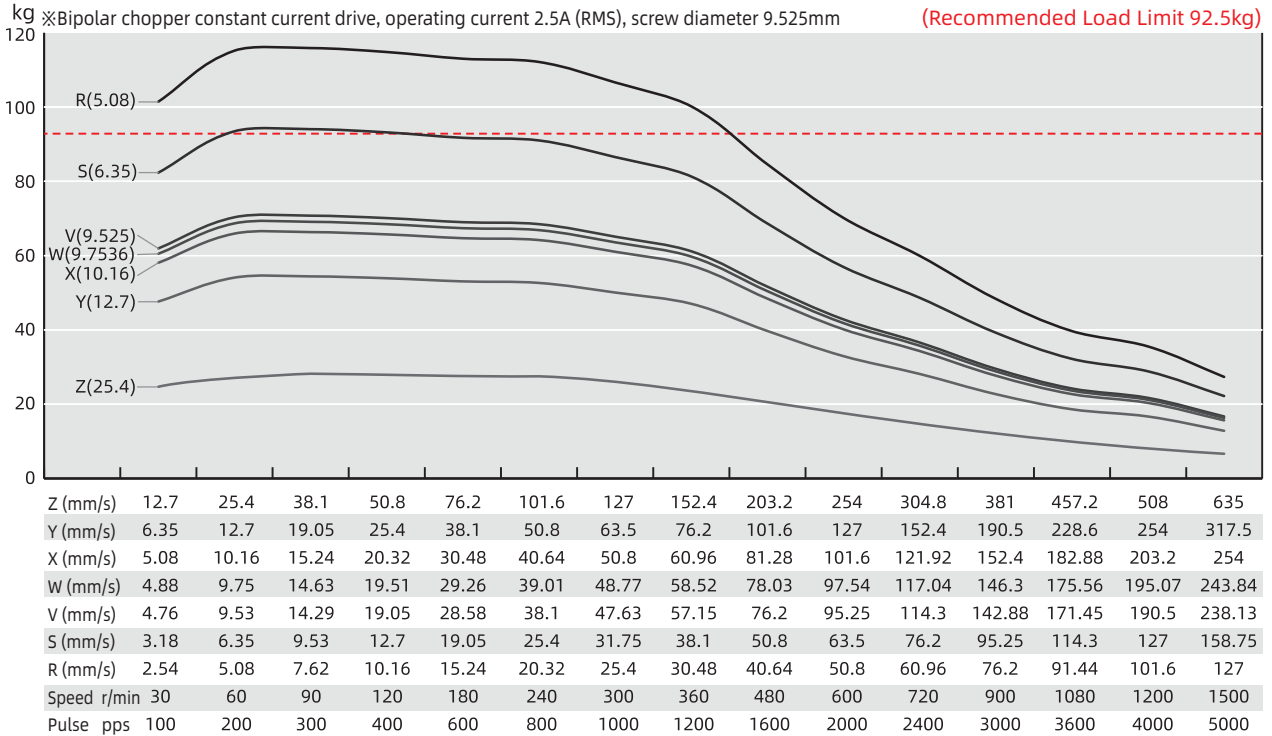


TEST CONDITION

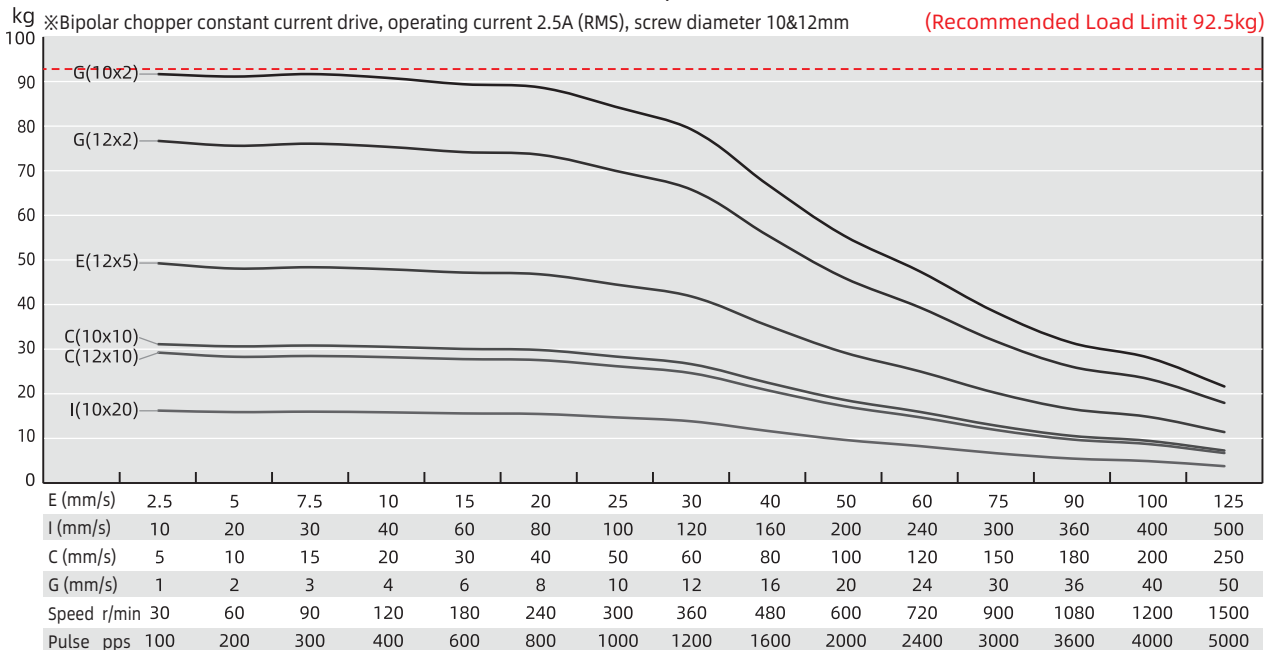
Testing Voltage: 48Vdc, Driver Model: DS-OLS4-FPD bipolar, chopper driver at rated current (rms).
Motor's thrust will be changed with different voltage and driver. 50% thrust margin is recommended.

57mm DLM

Size 23 Double Stack Speed Thrust Curves



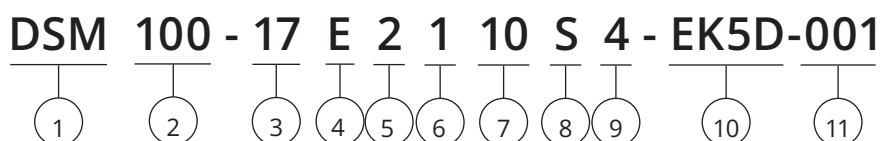
Size 23 Double Stack Speed Thrust Curves



TEST CONDITION

Testing Voltage: 48Vdc, Driver Model: DS-OLS4-FPD bipolar, chopper driver at rated current (rms).
Motor's thrust will be changed with different voltage and driver. 50% thrust margin is recommended.

[DSM] Part Number Construction



- ① Product Name
DSM Series Module
- ② Stroke (mm)
100 = 100mm
- ③ Motor Size

Motor Size (mm)	14	20	28	35	42
Motor Size (NEMA)	6	8	11	14	17
- ④ Motor Type
E = External type
N = Non-Captive type
- ⑤ Motor Step Angle
2 = 2 Phase with 1.8°
4 = 2 Phase with 0.9°
- ⑥ Motor Length
1 = Single stack
2 = Double stack
- ⑦ Rated Current / Phase
XX = X.X (A) / Phase
- ⑧ Lead Screw Code
Please refer to lead screw code selection table
- ⑨ Number of Lead Wires
4 = 4 Flying leads
6 = 6 Flying leads
- ⑩ Option
EKX = Encoder [X = Encoder Resolution]
P = Manual Knob
B = Brake
X = Rear Shaft
R = Encoder Ready
C = Customize
N = No processing at the rear end
- ⑪ Customer Sequence Number

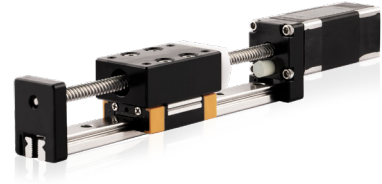
Example

Part Number	DSM100-17E2110S4-EK5D-001
Description	DSM Linear Module 100mm Stroke NEMA 17 External Linear Actuator 2 Phase / 1.8° Stepper Single Stack 1.0A / Phase S Lead (0.25" or 6.35mm) 4 Flying Wires EK5 Encoder with differential output 1,000 lines Serial Number 001

14mm DSM

Based on DINGS' platform products, high precision of lead screw linear actuator and self-developed simple linear module, DLM 14mm series is compact and reliable structure of linear solution.

DSM 14mm Series is good precision, high diversity of optional stroke and lead based customization linear module which can provide customers with integrated customization solutions.



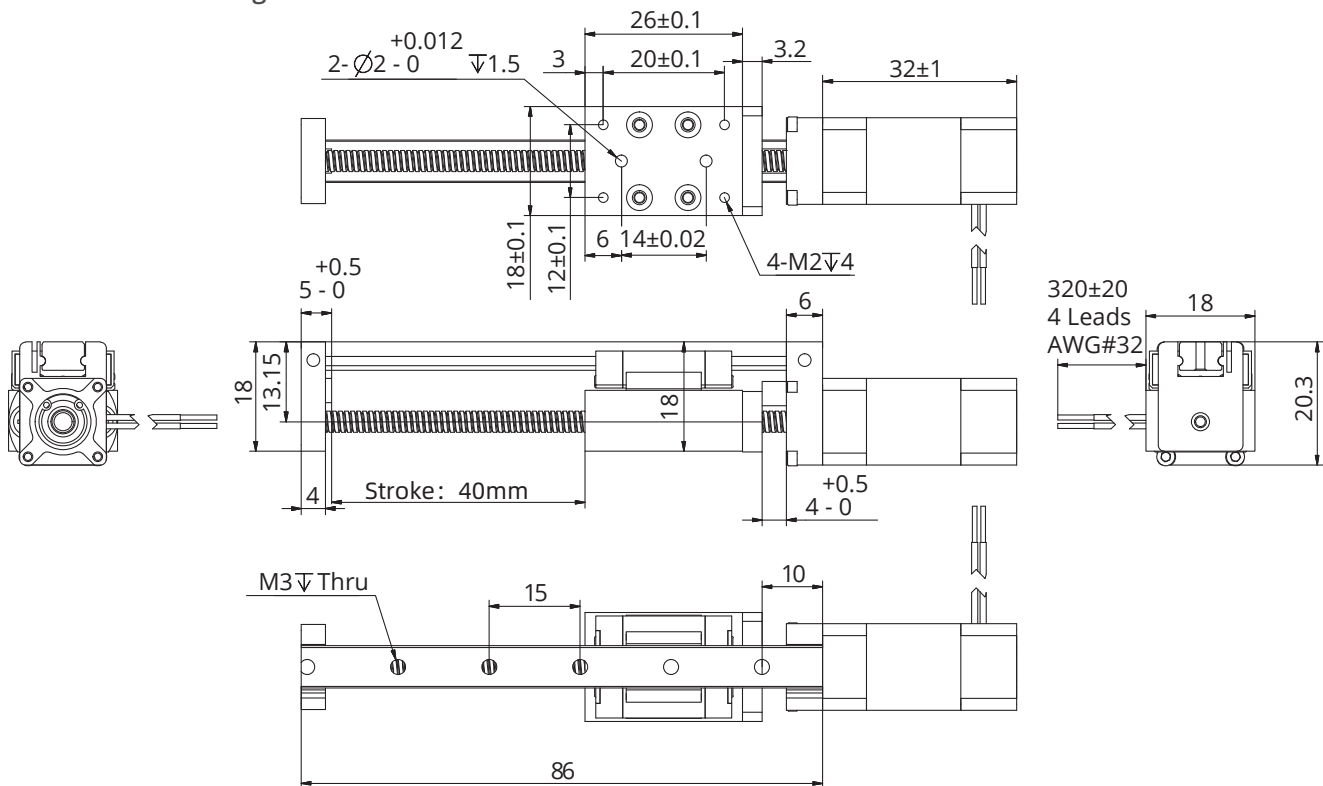
Motor Characteristics

Motor	Voltage (V)	Current (A _{RMS})	Resistance (Ω)	Inductance (mH)	Lead wire No.	Motor length (mm)	모터 길이 (mm)
6E2103	6.6	0.3	22	4.5	60	4	32

Available Lead Screw and Travel per Step

Screw Dia. (inch)	Screw Dia. (mm)	Lead (inch)	Lead (mm)	Lead Code	Travel Per Step @1.8° (mm)*
0.138	3.5	0.0118	0.3	AF	0.0015
0.138	3.5	0.024	0.6096	AA	0.003048
0.138	3.5	0.048	1.2192	B	0.006096
0.138	3.5	0.0787	2	G	0.01
0.138	3.5	0.1575	4	M	0.02
0.138	3.5	0.315	8	T	0.04

Dimensional Drawings

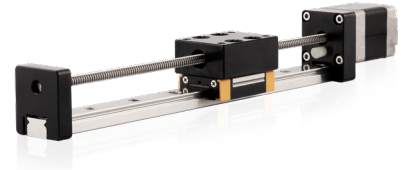


Note: Any travel can be customized within the maximum travel range

20mm DSM

Based on DINGS' platform products, high precision of lead screw linear actuator and self-developed simple linear module, DSM 20mm series is compact and reliable structure of linear solution.

DSM 20mm Series is good precision, high diversity of optional stroke and lead based customization linear module which can provide customers with integrated customization solutions.



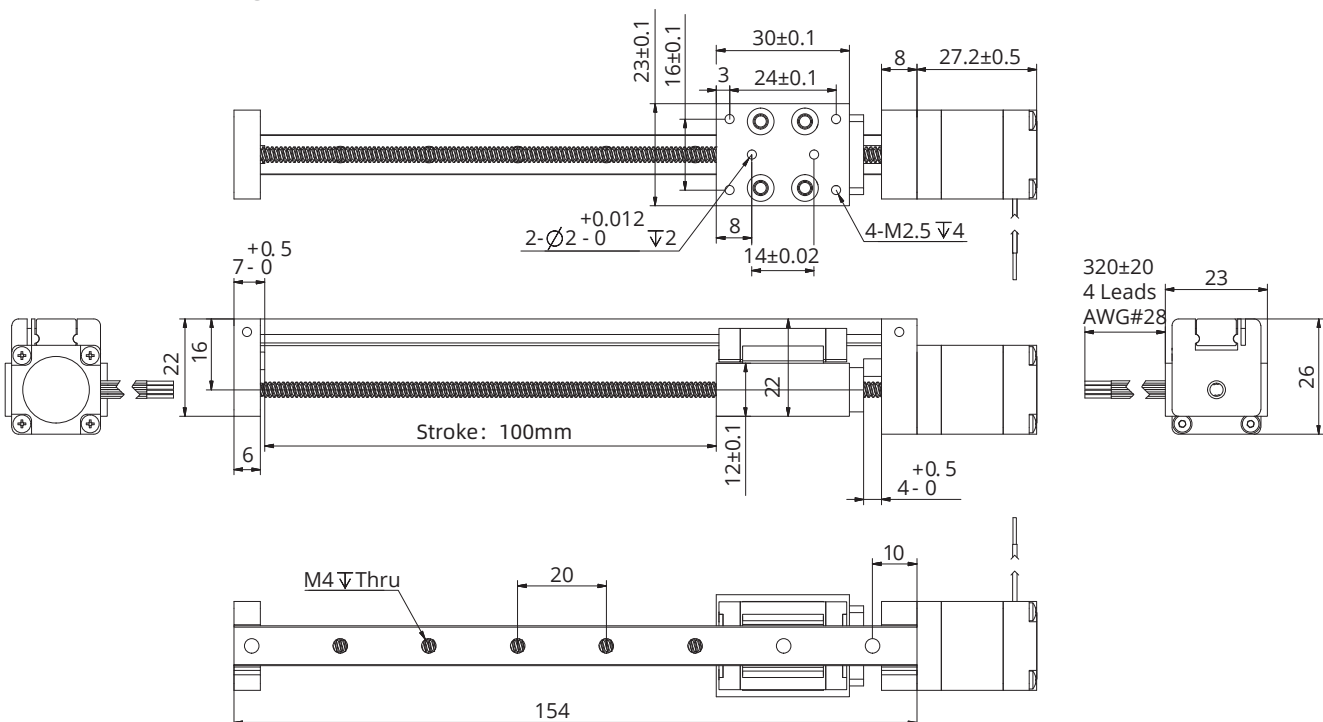
Motor Characteristics

Motor	Voltage (V)	Current (A _{RMS})	Resistance (Ω)	Inductance (mH)	Lead wire No.	Motor length (mm)
8E2105	2.5	0.5	5.1	1.5	4	27.2
8E2205	4.4	0.5	8.8	2.7	4	38.1

Available Lead Screw and Travel per Step

Screw Dia. (inch)	Screw Dia. (mm)	Lead (inch)	Lead (mm)	Lead Code	Travel Per Step @1.8° (mm)*
0.138	3.5	0.0118	0.3	AF	0.0015
0.138	3.5	0.024	0.6096	AA	0.003048
0.138	3.5	0.0394	1	AB	0.005
0.138	3.5	0.048	1.2192	B	0.006096
0.138	3.5	0.0787	2	G	0.01
0.138	3.5	0.1575	4	M	0.02
0.138	3.5	0.315	8	T	0.04

Dimensional Drawings

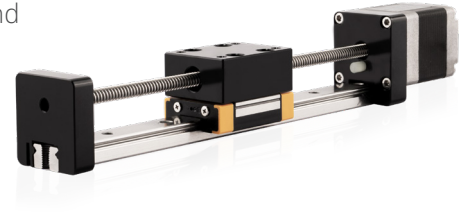


Note: Any travel can be customized within the maximum travel range

28mm DSM

Based on DINGS' platform products, high precision of lead screw linear actuator and self-developed simple linear module, DSM 28mm series is compact and reliable structure of linear solution.

DSM 28mm Series is good precision, high diversity of optional stroke and lead based customization linear module which can provide customers with integrated customization solutions.



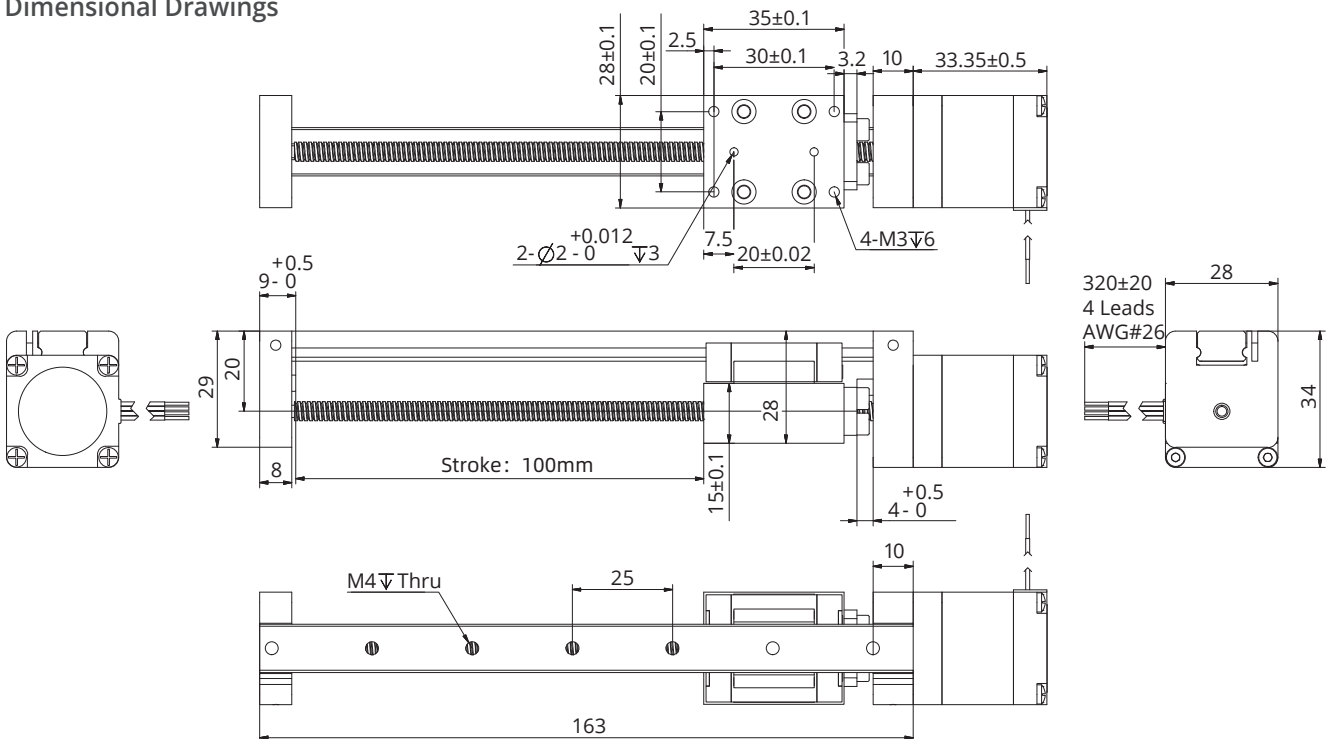
Motor Characteristics

Motor	Voltage (V)	Current (A _{RMS})	Resistance (Ω)	Inductance (mH)	Lead wire No.	Motor length (mm)
11E2105	4.55	0.5	9.1	6.0	4	33.35
11E2110	2.1	1.0	2.1	1.5	4	33.35
11E2209	3.9	0.95	4.1	4.0	4	45
11E2216	2.4	1.6	1.5	1.3	4	45

Available Lead Screw and Travel per Step

Screw Dia. (inch)	Screw Dia. (mm)	Lead (inch)	Lead (mm)	Lead Code	Travel Per Step @1.8° (mm)*
0.188	4.77	0.0128	0.3175	AL	0.0016
0.188	4.77	0.025	0.635	A	0.003175
0.188	4.77	0.05	1.27	D	0.00635
0.188	4.77	0.1	2.54	K	0.0127
0.188	4.77	0.2	5.08	R	0.0254
0.188	4.77	0.4	10.16	X	0.0508

Dimensional Drawings

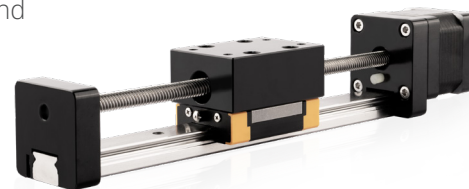


Note: Any travel can be customized within the maximum travel range

35mm DSM

Based on DINGS' platform products, high precision of lead screw linear actuator and self-developed simple linear module, DSM 35mm series is compact and reliable structure of linear solution.

DSM 35mm Series is good precision, high diversity of optional stroke and lead based customization linear module which can provide customers with integrated customization solutions.



Motor Characteristics

Motor	Voltage (V)	Current (A _{RMS})	Resistance (Ω)	Inductance (mH)	Lead wire No.	Motor length (mm)
14E2105	6.6	0.5	13.2	14	4	33.6
14E2110	3.5	1.0	3.5	3.6	4	33.6
14E2115	2.7	1.5	1.8	1.9	4	33.6
14E2205	12.0	0.5	24.0	29	4	45.6
14E2210	6.0	1.0	6.0	7.2	4	45.6
14E2215	4.0	1.5	2.7	3.2	4	45.6

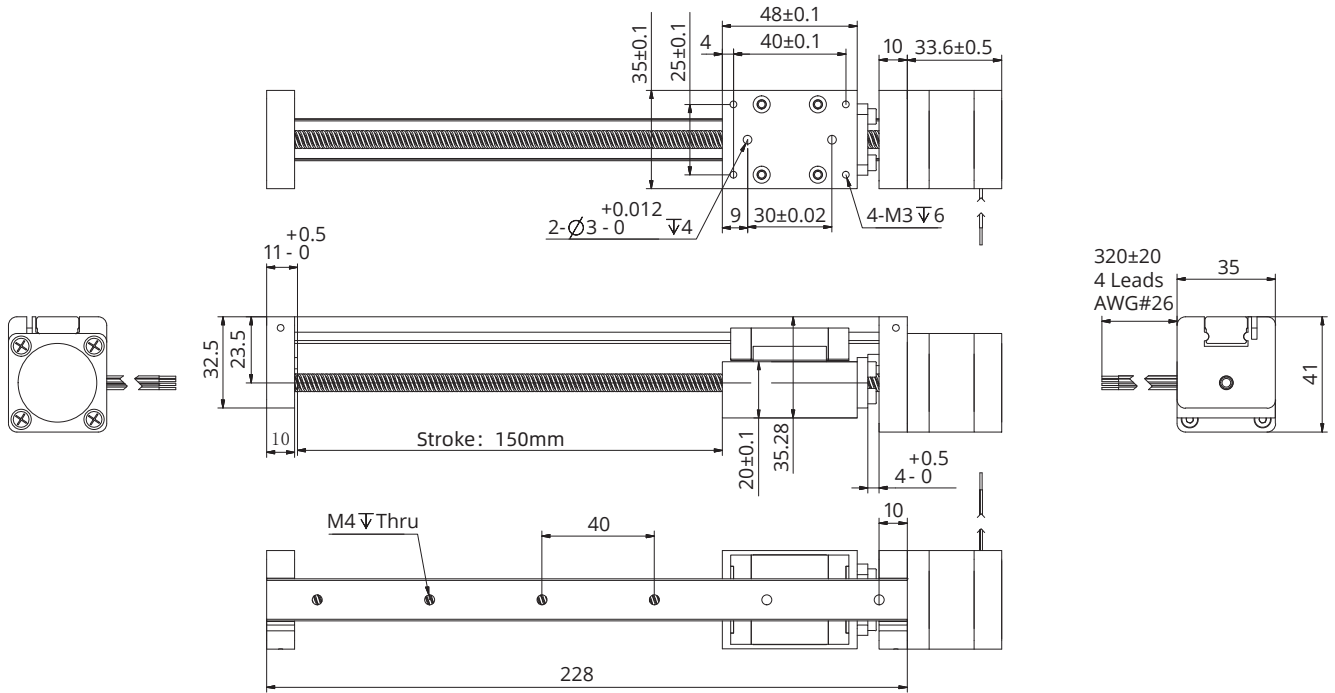
Available Lead Screw and Travel per Step

Screw Dia. (inch)	Screw Dia. (mm)	Lead (inch)	Lead (mm)	Lead Code	Travel Per Step @1.8° (mm)*
0.25	6.35	0.024	0.6096	AA	0.003048
0.25	6.35	0.0394	1	AB	0.005
0.25	6.35	0.048	1.2192	B	0.006096
0.25	6.35	0.05	1.27	D	0.00635
0.25	6.35	0.0625	1.5875	F	0.0079
0.25	6.35	0.096	2.4384	J	0.0122
0.25	6.35	0.1	2.54	K	0.0127
0.25	6.35	0.125	3.175	L	0.0159
0.25	6.35	0.192	4.8768	Q	0.024
0.25	6.35	0.2	5.08	R	0.0254
0.25	6.35	0.25	6.35	S	0.0318
0.25	6.35	0.333	8.4667	U	0.0423
0.25	6.35	0.384	9.7536	W	0.0488
0.25	6.35	0.5	12.7	Y	0.0635
0.25	6.35	1	25.4	Z	0.127
0.31	8	0.1575	4	M	0.02
0.31	8	0.315	8	T	0.04
0.31	8	0.0787	2	G	0.01

Note: Any travel can be customized within the maximum travel range

35mm DSM

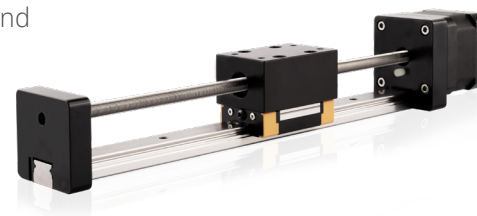
Dimensional Drawings



42mm DSM

Based on DINGS' platform products, high precision of lead screw linear actuator and self-developed simple linear module, DSM 42mm series is compact and reliable structure of linear solution.

DSM 42mm Series is good precision, high diversity of optional stroke and lead based customization linear module which can provide customers with integrated customization solutions.



Motor Characteristics

Motor	Voltage (V)	Current (A _{RMS})	Resistance (Ω)	Inductance (mH)	Lead wire No.	Motor length (mm)
17E2105	7.2	0.5	14.4	19.8	4	34.1
17E2110	3.8	1.0	3.8	5.0	4	34.1
17E2115	2.85	1.5	1.9	2.2	4	34.1
17E2205	11.0	0.5	22	46	4	48.1
17E2212	4.5	1.2	3.8	8.0	4	48.1
17E2225	2.5	2.5	1.0	1.8	4	48.1

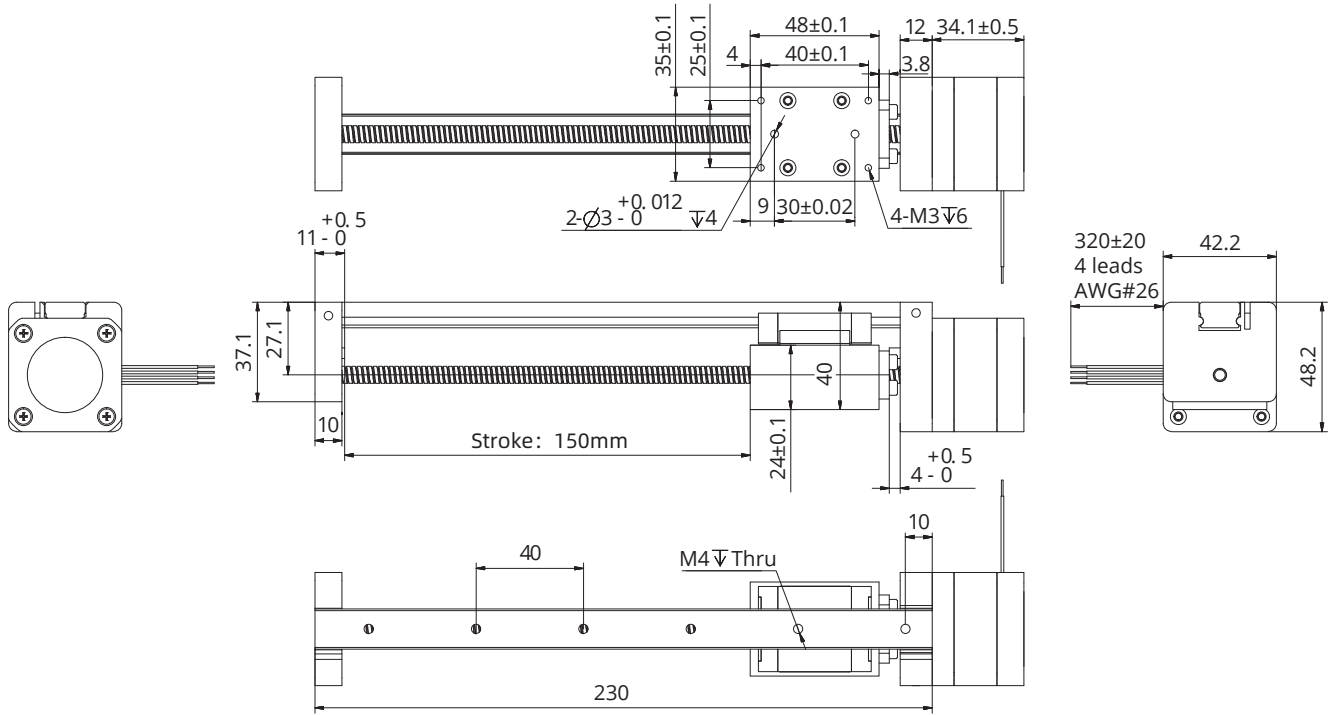
Available Lead Screw and Travel per Step

Screw Dia. (inch)	Screw Dia. (mm)	Lead (inch)	Lead (mm)	Lead Code	Travel Per Step @1.8° (mm)*
0.25	6.35	0.024	0.6096	AA	0.003048
0.25	6.35	0.0394	1	AB	0.005
0.25	6.35	0.048	1.2192	B	0.006096
0.25	6.35	0.05	1.27	D	0.00635
0.25	6.35	0.0625	1.5875	F	0.0079
0.25	6.35	0.096	2.4384	J	0.0122
0.25	6.35	0.1	2.54	K	0.0127
0.25	6.35	0.125	3.175	L	0.0159
0.25	6.35	0.192	4.8768	Q	0.024
0.25	6.35	0.2	5.08	R	0.0254
0.25	6.35	0.25	6.35	S	0.0318
0.25	6.35	0.333	8.4667	U	0.0423
0.25	6.35	0.384	9.7536	W	0.0488
0.25	6.35	0.5	12.7	Y	0.0635
0.25	6.35	1	25.4	Z	0.127
0.31	8	0.1575	4	M	0.02
0.31	8	0.315	8	T	0.04
0.31	8	0.0787	2	G	0.01

Note: Any travel can be customized within the maximum travel range

42mm DSM

■ Dimensional Drawings



DINGS'

Precision Motion Specialist

Headquarter , CHINA

Jiangsu DINGS' Intelligent Control Technology Co., LTD

No. 2850 Luheng Road, Changzhou Economic Development Zone, Jiangsu Province, China

Phone : +86-519-85177826

Fax : +86-519-85177807

E-mail : info@dingsmotion.com

www.dingsmotion.com

Shenzhen Office

Room 1105, Block C, CIMC industry demonstration park, Qiaoming Road, Guangming district, Shenzhen City

E-mail : info@dingsmotion.com

International Office

DINGS' Motion USA

355 Cochrane Circle Morgan Hill, CA 95037

Phone : +1-408-612-4970

E-mail : sales@dingsmotionusa.com

www.dingsmotionusa.com

DINGS' Motion Europe

4 Avenue du Grand Trémoutier 44120 - Vertou - France

Phone : +33-(0)6-41-37-80-07

E-mail : sebastien@dingsmotion.com

<http://fr.dingsmotion.com>

DINGS' KOREA Co., Ltd

C-702, 158, Haneulmaeul-ro, Ilsandong-gu, Goyang-si, Gyeonggi-do, Republic of Korea

Phone : +82-31-994-0755

Fax : +82-70-4325-0755

E-mail : daniel@dingsmotion.com

www.dingsmotion.kr

DINGS' JAPAN

101, 2-27-18, Nishi-kojiya, Ota-ku, Tokyo 144-0034 JAPAN

Phone : +81-3-6811-1335

E-mail : tsukahara@dingsmotion.com

www.dingsmotion.com

■ This catalog is the sole property of DINGS' and without the written authorization of DINGS', any copy or forwarding is prohibited.

■ DINGS' reserves the right to make changes without further notification to any products herein to improve the reliability, function or design.

■ DINGS' reserves the final interpretation.